



WAKE UP WORLD

THE BED EXPLAINED by **Hästens** 

since 1852



The bed decides the quality of your day.
A great responsibility for a little piece of furniture.



6-31	Wake up world
32-131	Obsessed with craftsmanship and natural materials
34-35	Our principle
36-43	Craftsmanship
44-81	Function
82-87	Horsetail hair
88-93	Wool
94-103	Cotton
104-107	Flax
108-113	Steel
114-117	Wood
118-123	Fabric
126-131	Quality
132-233	The beds we live for
134-135	Test sleep
136-137	Size
138-143	Hästens 2000T
144-149	Hästens Herlewing
150-155	Hästens Eala
156-161	Hästens Maranga
162-167	Hästens Superia
168-173	Hästens Excel
174-179	Hästens Marquis
180-187	Hästens Marwari
188-193	Hästens Appaloosa
194-195	Comparison table
196-205	Hästens Vividus
208-209	Levels of firmness
210-213	Choose and personalize
214-215	Beds for children
220-229	Fabric
230-233	Top mattresses
234-279	Thoughtful accessories
236-243	Headboards
244-247	Bed legs
248-249	Bed skirts
252-255	Pillows and down quilts
256-269	Bed linen
272-273	Personal accessories
274-277	Children's collection
278-279	FAQ
280-301	Our family heritage and how we pay it forward



**What's the
point of
surviving?**

**WAKE
UP
WORLD**

All multicellular animals sleep. You know, that odd state when we lie unconscious, defenseless and paralyzed for several hours. If there had not been very good reasons for sleep, then evolution would have most likely done away with it a long time ago.

To survive you can sleep on anything.

Lie down on bare soil, a stone floor, a blanket, a foam mattress, in a hammock. Or in your bed. Whatever you sleep on will probably take you from eleven at night until seven in the morning.

NIGHT IS MOTHER OF DAY.

But what's the point of just surviving? It's about the quality of your life. The quality of yourself. How awake and welcoming you are towards everything the world has to offer between seven in the morning and eleven at night. With all your senses. With a fully-activated brain and a warm, wide-open heart.

THE MOMENT OF TRUTH: 4 P.M.

It's during your waking hours that you'll notice how well you have slept. That's when your resting place will reveal its true character. If it really provides you with deep sleep and allows every part of your body to have its essential rest and recovery. Or if it secretly steals from your moments here on Earth.

THE PLATFORM FOR A BETTER DAY.

Hästens manufactures world-class handcrafted beds. There is an enormous amount of work and research tucked into each bed. What you experience as a comforting embrace when springs, horsetail hair, wool fibers, cotton tassels, flax and wooden joints cooperate is, in fact, the fruit of nearly 170 years of relentless work.

We live to provide you with really deep quality sleep – the kind of sleep which gives you the opportunity to blossom to your full potential. Every day.

**Be the best
version of
yourself.
Every day.**



**WAKE
UP
WORLD**

You know who we mean. The person you are when you have slept well and wake up feeling alert. Who looks in the mirror and likes what they see. Who goes to work, or school, and solves the toughest problem. Who comes up with the best jokes during the date, not after. Who remembers the name of everyone at the party. Who is patient with the children even when they don't share your view of the world. Who is kind and warm-hearted to everything and everyone around. Who handles the entire workout. With a body which feels as young as it actually is.

And who even has the stamina to do the dishes straight after dinner, even though it got late.

WHAT DOES THIS PERSON DO THESE DAYS?

We understand that you would like to find this feeling again. And again. And again. And that perhaps you spend a lot of time, and a lot of money, trying to find it. Cucumber masks. Food supplements. Rivers of caffeine. Self-help apps. Checklists. Because you know that the reward is great if you succeed.

Sometimes you do. But not every day.

FREE YOURSELF.

Imagine that you sleep really, really well tonight. (Not necessarily longer than usual, just really well.)

Tomorrow you live as the person you really are.

Free from the shackles of fatigue.

Now, imagine that you sleep this well every night.

Who knows, after a while, you may be struck by a sudden revelation: Perhaps the person who for so long has been your ideal person was actually the second-best version of yourself.



WAKE
UP
WORLD

**What if
the world
is just a
little tired?**

You are not alone. Those near and dear to you can tell exactly how you've slept. Colleagues and clients as well. It's contagious. When you're alert you give joy to those around you. When you're at peace you instill a sense of calm. It's as if your surroundings become a mirror of your senses.

You affect the people around you – just like they affect you. How well you sleep makes a greater difference than you may think.

THE MORE PEOPLE WITH ENERGY TO BE KIND, THE BETTER.

Sleep quality is as important to you and those close to you as it is to the men and women who govern our countries. The leaders who affect the community the most, who have the most responsibility and make important decisions, may not be the ones who sleep the best at night. (Some of them even take pride in proclaiming how little sleep they survive on.)

At what cost?

We believe that our planet could be a kinder place – if more people had the energy to be kind every day. If more important decisions were to be made in a calm state of mind, reflection and trust. Oh, how much we would like to invite all presidents, prime ministers and dictators to sleep for one night on a Hästens bed.

THE WORLD IS THE SAME. AND YET NOT.

Studies show that a rested person perceives neutral things as more positive compared to a tired person. Exactly the same impressions are perceived differently. After poor sleep, subjects report more negativity and more situations are interpreted as a threat. After a restful night's sleep, however, it appears to be easier to see opportunities instead of problems.

Perhaps what annoys us is just a little mosquito. Perhaps our bad luck is actually good luck dressed in a clown's costume. Perhaps we are in agreement, but we just don't know it.

What do you think would happen tomorrow if the entire world slept just a little, little bit better tonight?



Hästens Blue Check
40 years anniversary
Since 1978



**The sleep
we want to
give you.**



**WAKE
UP
WORLD**

Sleeping is one of the most important things you do. Does it actually require a luxurious piece of furniture to satisfy such a basic human need?

Answer: No.

What we build are not luxury beds. There is a lot in a Hästens, but none of it is excessive. Every little detail has a function: to increase the conditions for as deep a sleep as nature has intended for us human beings.

By creating a natural sleeping environment, we would like to bring you back to your roots. Or rather, the roots to you. Hästens is your oasis of natural materials in an artificial world.

1. OPTIMAL SUPPORT. 2. OPTIMAL SLEEPING ENVIRONMENT.

These are the main ingredients we use to achieve quality sleep. Thanks to pliable support, your muscles can relax at the same time as your spine remains straight. As the bed's material breathes and wicks away moisture, your body is able to regulate its temperature to find a cool and pleasant balance.

The effect can be easy to miss since you unwind and fall asleep so quickly. Most likely you will sleep through all your natural sleep cycles, deeply and undisturbed. And if you were to wake up at the wrong time, you'll quickly fall back to sleep again.

Unhindered oxygen saturation helps you build new cells and heal what's needed. At the same time as your brain is allowed time to process impressions, consolidate memories and develop new neural pathways.

Thus, the best conditions for your body to recover and gain new strength.

SLEEP WHICH CANNOT BE FELT.

That fantastic feeling of being on a cloud, of hovering weightlessly, which you can experience in all our beds – we actually don't want you to experience it too often. How about ten minutes at the beginning and ten minutes at the end of the night?

Alright then, fifteen minutes.

But in between that, your body should experience no sensations. It should be able to concentrate entirely on its inner universe, not its outer.

A collage of faces and abstract shapes. The background features a close-up of a man's face with a beard, looking slightly to the right. Overlaid on this are several semi-transparent, overlapping shapes in various colors: a light blue circle, a yellow-green circle, a grey circle, and a purple circle. The text 'WAKE UP WORLD' is written in white, bold, sans-serif capital letters in the upper left corner.

WAKE
UP
WORLD

**Keep
calm,
it's just
chaos.**

What will this day have to offer? Every morning, just before you open your eyes, you haven't a clue what will stare right back at you. Just like every night when you close your eyes to dive into the land of dreams.

Life is amazing. Cool. Exciting. And scary, in all its unpredictability.

You know, the kind of day when you make the train at the last second. When you sit down in the last vacant seat. When you suddenly realize that the person sitting next to you is your long-lost friend from elementary school. And you discover that together you still laugh until your sides hurt.

And then, of course, there are the other days.

Whichever kind of day it turns out to be, you just have to throw yourself into life's more or less unpredictable chaos and make the most of it.

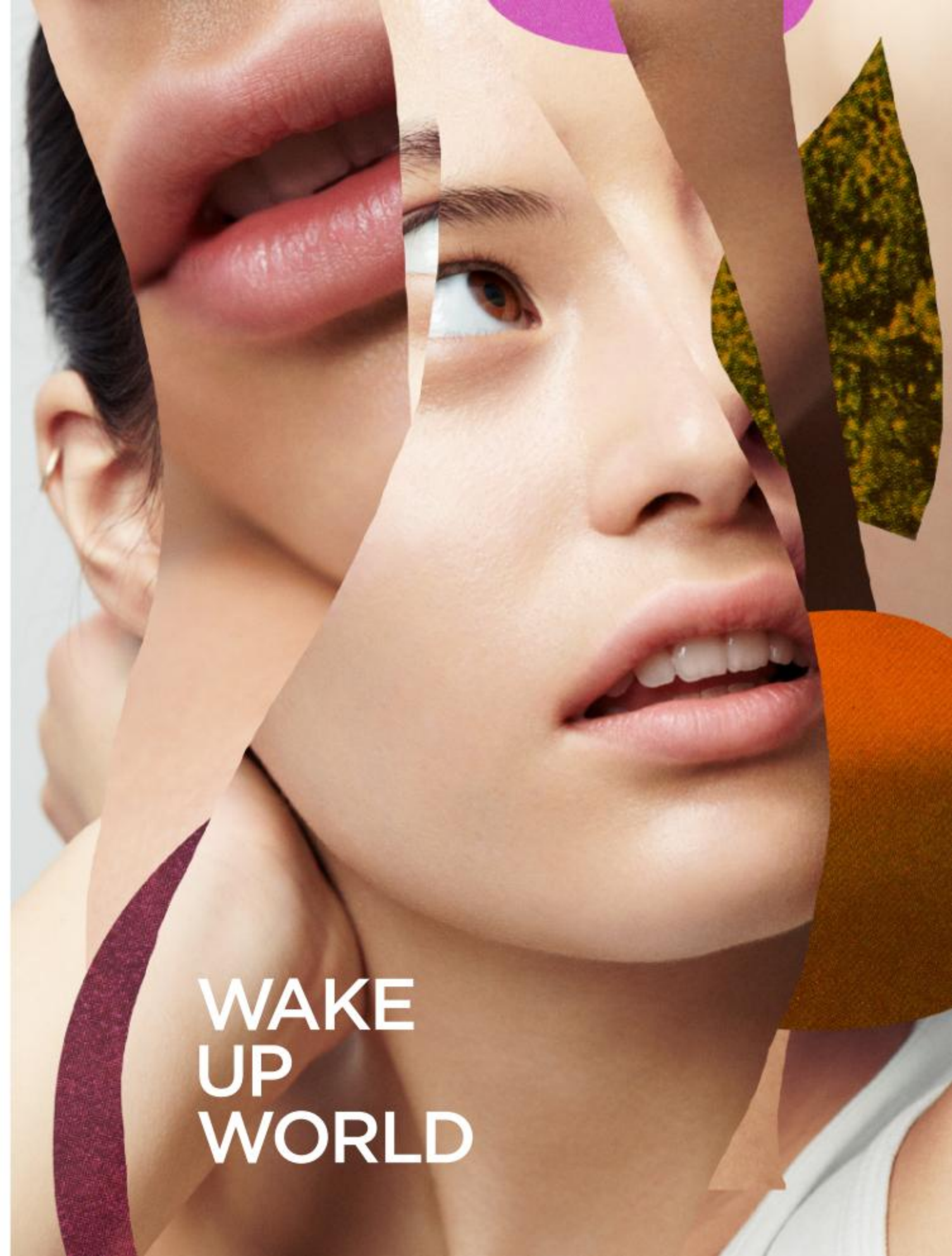
GO WITH THE FLOW OR STEM THE TIDE?

How can you prepare yourself for the wonderfully unpreparable? One way is to use sleep to fortify yourself with extra reserves of energy and calmness. If you are well-rested, then your ability to take on whatever life has in store increases. As does your ability to leverage even the tiniest advantage. To deal with stress or bad news – or simply ignore it. In short, to embrace chaos.

Sometimes an energetic view is enough to shrink problems into perspective and let the delightful dominate your day.

And there, in the midst of the wide ocean called life, you stand and cope with it all. Sometimes soaked by tall waves, yes. But steadfast as a rock. And most of the time happy and grateful for the beautiful view.

**It's never
too late to
wake up.**



**WAKE
UP
WORLD**

**It's all about what you do.
Not when you do it.**

American Harry Bernstein made his debut as an author of novels at age 96. After that he wrote two more.

When a Swedish seamstress turned 99, she attended a computer class. When she turned 100, she started a popular blog. Since then she has debuted both as a writer and an actress.

Colonel Harland D. Sanders from Indiana, USA, had tried out more than ten different jobs and was 49 years old when he realized that he was a decent chef. At 69 years old he founded a restaurant chain selling fried chicken, which is now established in more than 125 countries.

To swim from Cuba to Florida was the life goal for a certain New York-based journalist. At age 64 she achieved it. The 177 kilometers took her 53 hours (and countless involuntary gulps of water).

Peter Mark Roget, son of a Swiss priest, started to list words and their synonyms when he was young. At 73 he published them. Today, his thesaurus has sold more than 40 million copies.

You see, it's never too late to wake up to what lies dormant in you. And to start doing what you like. The first step? Treat your body and soul to the best conditions to live every day with maximum energy, focus and joy.

OBSESSED WITH

CRAFTSMANSHIP AND NATURAL MATERIALS

32-131

There is nothing superfluous in your Hästens.

Apart from the nameplate, perhaps. As you may have guessed, we are sticklers for detail. Each of which must have a reason for being. Otherwise, we do not incorporate it. That's because our beds are not design objects. Form must follow function. And at Hästens our only function is to contribute to your sleep comfort for a more wakeful day.

It's crazy how many things there are to attend to, assess, improve and then ponder about a bit more. For example, the direction of the scales in

the wool fiber, the elasticity of the cotton threads, the pre-tension on the steel springs, the growth rate of the pine, and the degree of curliness of the horsetail hairs, to name a few of the most obvious considerations.

All of which begs the question of how a little brass plaque with your name on it contributes. It's there to remind you that you have a bed where not a single detail is superfluous, apart from the nameplate itself.

THE REASON WHY WE SEW SOFT WAVES, NOT HARD ANGLES:

To make sure that the padding remains completely even and reaches into each millimeter of the top mattress. Quilting with sharp angles is not as flexible and can result in corners where there is too little material.

THE REASON WHY WE ALLOW THE FABRIC TO REST FOR THREE DAYS BEFORE SEWING IT:

Because the weave needs to hang and loosen up after sitting on a roll. This downtime helps the fabric relax and release tension – just like when you rest.

THOUSANDS OF BUILT-IN REASONS WHY. SOME EXAMPLES:

THE REASON WHY THERE IS ONLY A SINGLE THREAD IN THE SIDE-STITCHING:

Not because we are miserly, but because we are precise. When the same strong thread runs through the entire mattress – or at least along a whole side of very large mattresses – it makes the tension even, and the stability well-balanced.

THE REASON WHY THE MATTRESS CORNERS AND EDGES ARE EXTRA STABLE:

Because your bed is also used as a chair. Strengthening the corner and edge springs makes it easier to sit, lie down, and get up again.

THE REASON WHY THE LEGS ARE RETRACTED:

Because we can hardly retract your toes. After all, you don't want to stub them as you feel your way round in the dark.

THE REASON WHY THE FABRIC HAS A CHECK PATTERN:

It's not a just a pretty pattern, it's also a work template for our craftsmen during construction. If the fabric ended up askew, it would reduce its durability, surface tension, and comfort.





Some people are all thumbs. Others have intuitive flair.

Craftsmanship requires more than hands that can feel. It requires hands that are present, hands that can think.

It's evident to anyone who works with natural materials. Take wool for example. Just like all organic materials, it has a personality. It is unpredictable and stubborn. A true craftsman can read the material and knows how to prepare, card, and weave the fibers. They are able to tease the best individual qualities out of the material while ensuring absolute uniformity in the finished product. It's not about commanding the material so much as cooperating with it. That requires hands that are present and can think.

Tactile intelligence is the best way to describe it. Run your hand over a beautiful dining room

table, stroke a cashmere sweater, or a car door. Your fingers read the quality effortlessly. You're guided by your tactile intelligence to assess and conclude. This is a skill that is highly developed in our craftsmen but is appreciated by everyone.

It's what gives Hästens its allure.

You want to feel. And sinking into your bed should be the most wonderful feeling in your home. Here, your eyelids should feel heavy and your body light as you slowly glide into the world of sleep to emerge thoroughly rested for a new day. How we can evoke these feelings is not something that can be worked out on a calculator or quantum computer.

It's something you have in your fingers.

The cotton-tassel-tier lives in Köping.

And, with a bit of luck, you may also see the horsetail-hair-ruffler in its natural habitat.

Making a special bed requires a number of special occupations. Some of them don't even exist outside our factory in Köping. You've probably not heard of mid-stitchers, fabric-rackers, cotton-tassel-tiers or horsetail-hair-rufflers.

These are such unusual jobs that we must methodically train each specialist ourselves from scratch.

For example, in our mattress department there are five different workstations where different elements of the mattress are worked on. An apprentice in this department is assigned to one station. They begin their work there on a test mattress under the close supervision of a master craftsman. So at the horsetail-hair-ruffling station, for example, they would learn the craft and art of gently ruffling the horsetail hair by hand to work it into even, well-sprung layers.

This is not something that can be mastered in a week. Or even a year for that matter.

The apprentice must do more than learn the steps. They must develop a genuine feel for their work. That takes about two years (3,500 working hours) of supervised training before they are deemed ready by the station master. It's then,

and only then, that the apprentice is allowed to work that station on their own.

For this reason, our workers can't just hop over to another workstation to help out. We're a close-knit team, but we're a team of specialists.

So, what does a cotton-tassel-tier do, then? Well, the cotton-tassel-tier is an expert on keeping things together, at least as far as our beds are concerned. The cotton-tassel-tier places the mattress between two large panels to compress it. Each side of the panel has corresponding holes positioned at precisely-calculated support points. Using these holes as a guide, the cotton-tassel-tier carefully passes a large needle and thread through the compressed mattress until the thread appears out the other side. Once the thread has been successfully drawn through the mattress, a cotton tassel is tied on each end. When the mattress is released from compression, the thread is pulled taught as depressions form around the tassels. This creates the characteristic dimpled surface and stabilizes all the layers of the mattress laterally.

To learn what the mid-stitchers and fabric-rackers do, we invite you to tour our workshop in Sweden.



The story of our beds
begins in the cradle.



THE GUDAJ FAMILY

THE TAPPER FAMILY

Hästens is a family company – in many ways. First because the Ryde family has run it for five generations. But just as important are the other families who, together, make up the Hästens family. For many people in Köping, working at Hästens is a decision formed from childhood. Knowing that your grandmother built a bed for a princess in a distant land naturally inspires. But it also provides children in this town with a compass and a code: Hard work and the relentless pursuit of perfection pay dividends for yourself and the ones you love.

That is why the profession of bed master is often handed down.

THE TAPPER FAMILY

Three generations of the Tapper family are just one example.

Jennie Tapper works as a cutter and team captain at our sewing department. She started at Hästens as a seamstress 23 years ago – just a few months after her mother Yvonne. That was a whole 35 years after Jennie's grandmother Gun-Britt stopped working here. And soon more people in Jennie's generation joined us: her partner Anders plus her brother Jimmy and his wife Jessica. A few years later, Jennie's little sister Karin and Jessica's father Olle took positions with us. And a few years ago, the next generation came along after having gotten their feet wet in a summer job: Jennie's daughter Amanda and her niece Hanna.

Today, a total of eight people in her family work together at Hästens (not to mention the 108 other skilled craftsmen here). Every day. Year after year.

How is it going? "We are developing all the time, thanks to the fact that Hästens invests so much in their staff. And almost everyone in the family works in different departments, so despite having the same workplace, there is still reason to ask each other how it was at work when we go home," says Jennie Tapper, adding that they are all extremely proud to work at Hästens and feel a strong passion for the beds they create.

THE GUDAJ FAMILY

Another "Hästens family" is the Gudaj family, with two generations of bed builders.

Going from buttons to needle and thread may seem like a small step. But for Emir Gudaj it was a giant leap. He worked in a car factory where robots did everything except pressing the buttons that controlled them. That was Emir's task.

Since Emir appreciates well thought-out, patient craftsmanship, he applied to work here at Hästens. First he worked at the top mattress department, but soon moved on to middle mattresses. Stuffing, assembling, applying the bolster fabric, and tassel-tying was fun – but Emir soon discovered what he liked most of all at Hästens: "Side-stitching! And my colleagues here at work."

His joy working here attracted his father Ismet to join us. And then his sister Saha. And then his sister Amanda. And then Safeta, his uncle's wife. And then his cousin Mensur.

Today, Emir is the vice team captain for his department and travels around the world to trade fairs in order to showcase his exceptional knowledge in side-stitching.

(Incidentally: Emir has one other sister. No pressure, sis, but when are you going to start working here?)

So, exactly how hard is it to build a Hästens?

It takes an extremely long time, but every second feels meaningful when you are obsessed with creating a truly world-class bed. Just building a single Vividus requires at least 350 hours of work by our craftsmen – not including the time it takes to prepare the horsetail hair, wool, cotton and flax, or create the steel springs, wooden frame and fabric.

On the following pages, you'll find the key steps to our production process. Each is constantly being refined with the goal of creating beds that provide you with more restful nights and wakeful days.

If any step is not perfect, then we have to start over. Every employee has the authority to stop production at any time if they see even the tiniest error. This may help you understand the one, most important skill that each of our craftsmen must master: patience.



1 Double-woven bolster fabric is cut to millimeter precision using our iconic check pattern as a template. Then, the fabric is hung out to relax for at least 72 hours. Afterwards, when the fabric is perfectly smooth, we sew "cotton capsules" for the top mattress, middle mattress, and base.



3 The trained hands of our master bed builders ruffle the horsetail hair, wool and cotton into even layers. Taming these natural materials requires the highest levels of intuition and experience.



2 The horsetail hair is washed, sterilized and twisted into a rope, which transforms the strands into curly springs. Once it sets, we feed the rope into a clever machine that carefully unbraids the strands and sends clouds of fluffy horsetail hair tumbling out for collection.



4 Every spring is placed in its own pocket of fabric and assembled by hand, one after another, on a frame. The pocket springs must be precisely distanced from each other so that they can function independently and virtually without a sound. This assemblage is our secret recipe, one we have been continuously refining since the day pocket springs were invented.



5

All layers of horsetail hair, wool and cotton are placed above and below the pocket spring system. Voilà! A middle mattress. Next, we compress and insert it into the "capsule" of blue-check cotton fabric, slowly to get all the components arranged perfectly smooth and symmetrical.



7

The mattress is compressed between two large panels with precisely calculated holes on either side. The cotton-tassel-tier uses a long needle to push a thread straight through the mattress. A tassel is attached on each end of the thread to fasten it. This is how the mattress is sealed and all layers are laterally stabilized.



6

We take a 30-centimeter-long needle and one length of thread that will be sewn by hand around all four sides of the mattress. It joins together all the layers of horsetail hair, wool, cotton and flax, stitch by stitch. The side-stitching on one Vividus alone takes a craftsman four days to complete.



8

A foundation of slow-growing pine forms a solid base upon which we methodically lay down thick layers of horsetail hair, wool, cotton and flax at the bottom of the spiral springs. This is then linked to a Bonnell spring system (on many models, we also assemble pocket spring systems).



*Okay, even more details.
Here's how we make our top mattresses.*

1 The blue-check bolster fabric is sewn with a pattern that is matched to your chosen top mattress size. With methodical precision, the fabric is stretched between hooks inside a wooden frame so that it remains smooth and relaxed.



2 Layer upon layer upon layer of soft and pliable padding is placed on the bolster fabric. The top and bottom wadding are made out of high-quality wool and cotton, so that the white squares in the pattern retain their pure luster. The horsetail hair is patiently ruffled into even layers by experienced hands.



3 When all layers are balanced down to the slightest detail, the top side of the bolster fabric is hooked tightly into the wooden frame with the same precision and pattern matching.



4 The top mattress is quilted with a sewing machine that is almost 100 years old. Its arm is several meters long, which allows it to sew a continuous soft wave pattern across the entire mattress. It is stitched without sharp angles so that the padding is evenly distributed, making the mattress wonderfully soft. On Vividus, all thread ends are tied together by hand.



5 Now it's time to seal the top mattress forever. On Vividus, we remove a little bit of fabric and stuffing from each outer corner so that they aren't pushed up when you lie down. This way the mattress remains perfectly straight.

Why do something in one hour when you can do it in two?

Whether it's folding an origami swan or building a space rocket, when you're pursuing your passion, you don't watch the clock.

In like manner, we do not count work hours at Hästens. (After all, we are not manufacturing time here in Köping, Sweden). Our focus is on creating comfort; balancing the soft with the firm to ensure that your body feels an invigorating and secure embrace while still experiencing that dreamy, soft hug of a Hästens.

It is difficult to calculate the absolute balance of comfort mathematically. We usually say that we have found it when you don't notice the bed (or when you ask: Where did gravity go?).

In many ways, it resembles a handshake. Some come across as indifferently soft. Others almost painfully hard. Then there is the perfect transfer of confidence between two people. A good handshake can never be calculated, you just know it when you feel it.

For the same reason, a Hästens bed should take exactly the time that is needed.

Our aim is to create the best beds in the world, so we simply keep on going until we feel they are worthy of the title. Take side-stitching for example. It determines the stability and pliability of your bed's many layers. The thread running through a Vividus bed can take up to four days to stitch in a manner that we are happy with. And if it needs a few hours extra, then it takes a few hours extra.

No bed leaves our hands until we believe that it achieves Hästens' goal: sleep that wakes you to the best version of yourself.

Of course, it would be possible to build a bed much faster than we do at Hästens. And in some way that would be more suited to these transient times. But that is not our style. We make beds that are meant to last for a quarter of a century, and designed to be part of your life's journey every day and night along the way. In which case, it is well worth taking a few hours extra.



Is it at all possible to relax in a bed if it has been built in a hurry?



Some of our very awake bed masters.



And some more.

And these too.





And here are a few more.

Yes, there are many.



Perfect sleep
according
to Hästens:
When you feel
perfectly rested
at four o'clock in
the afternoon.

Ah, you thought you'd seen them all?





We really love our employees.

These too, of course.





And four more.



Nice to have you here! (And to all of you who are not present in these pictures, we hope to see you in the next catalog!)

Hästens bed. A dual-purpose item.



Why are we always going on about the number of layers in a Hästens bed? Because it's those different layers, up to 34 in some beds, that give our beds such superb sleep comfort.

The secret is in the combination: how the natural materials behave together. The order in which they are placed. As well as how tightly or airy the fibers should be ruffled together.

As a result, the same layers that are strong enough to evenly support your body weight are also open enough to allow moisture from your body to fall straight through them.

Both at the same time.

Nature's materials and nature's laws in an unrelenting synergy. Follow us on a trip through a Hästens bed and we will show you how it works.

Moisture:

THE TOP LAYERS.

A remarkable combination of cotton, wool and horsetail hair. Cotton absorbs moisture, while the wool and horsetail hair fibers are "transparent" to moisture. Water molecules flow freely out through these strands – which is great considering that you sweat 0.5 to 1.5 liters every night. Passing the moisture away keeps your skin drier, so your body can maintain a comfortable temperature.

Let's look at a horsetail hair and wool fiber through a microscope. The core of the strand is hydrophilic, i.e. it attracts water molecules. Every fiber can carry up to 30% of its weight in moisture and still feel dry. And the water molecules dissipate through the surface just as easily as they slip in.

A FEW LAYERS DEEPER.

Here you find many more layers of cotton, wool and horsetail hair – plus layers of flax. These are still dry. Thanks to nature's proclivity for equilibrium, every dry layer draws moisture towards itself from the layer above. Air is also "pumped" around by the springs (each individual pocket acts as a bellows) when you move. Water molecules also move laterally into the surrounding dry air. Silent air conditioning which provides a fresh sleeping environment.

And what if it's cold in the room? Then the fluffy layers of dry fibers team up with the air around them to function as insulation. The result: A Hästens gives your body optimal conditions for controlling temperature, regardless of whether it is hot or cold.

AT THE BOTTOM.

Here at the bottom, a new chapter begins with the Bonnell spring system, as does our trip back up to provide the optimum support.

Support:

OUR "LAYER-UPON-LAYER" TECHNOLOGY CAN ALSO BE CALLED "SPRING-UPON-SPRING".

The steel springs are the most eye-catching aspect. But there are three additional kinds of suspension in a Hästens bed. Each strand of natural fiber is also a spring – in a smaller diameter. They all work together to equalize pressure and increase comfort to an even higher level.

THE LARGE SPRINGS.

The Bonnell and pocket springs do the heavy lifting. They absorb the greatest part of your weight and distribute it evenly over the entire bed for direct support without pressure points.

THE MINI SPRINGS.

We use a natural process to convert each strand of horsetail hair into a resilient coil with a diameter of just under a centimeter. Millions of these small spirals are ruffled together – in every which way – to form a cloud-like, springy mat that "embeds" the steel springs and creates soft and flexible support.

AT THE TOP: THE MINI-MINI SPRINGS.

Only select wool and cotton fibers with the right size, curliness and smoothness can be used in our mattresses. The diameter of these tiny springs is kept down to 12-13 micrometers so that they can easily conform to the smallest curves and spaces on your body. This provides your skin with even and supple support from the mattress – this is what we mean with the characteristic soft embrace of a Hästens bed.

You control the position you fall asleep in. But not the position you sleep in.

Good morning, let's play with the idea that you are an exactly average sleeper. No matter how neatly and tidily you placed yourself on the bed last night, you will have turned at least 20 to 40 times during the night, according to studies. Onto your back, onto your side, onto your stomach, onto your other side. Maybe even upside down, who knows? In fact, you probably spend half your night in a totally different position to the one that you think you normally sleep in.

Once you're asleep your body does what it wants, putting you at the mercy of your mattress.

But that is no problem when you snuggle up

into a Hästens bed. It provides balanced support to your anatomy: head, shoulders, back, stomach, rear, legs and feet. No matter how you may be lying we can keep up. Our bed's purpose in life is to keep your spine and windpipe properly aligned.

Do you share your bed with someone else? Another body that also does what it wants all night? We've got you covered. The weight of the bed and the individual suspension give you the opportunity to sleep deeply and comfortably without interfering with each other. That way you both wake on the right side of the bed, no matter how you spent the night.



And suddenly you open your eyes
and realize what a straight-backed
human you are.



Yes, by all means. Synthetic materials can indeed be good.


We have nothing against synthetic materials. It is just that we are in favor of everything that we believe enhances your quality of life.

At Hästens, everything has its place. Based on our experience, the place for non-porous materials like latex, polyurethane, and foam rubber simply is not in a bed. We think that they are just too hot and uncomfortable to sleep on. Within 30–40 minutes, you can notice that they breathe poorly, retain moisture and lock in heat. Furthermore, they contain solvents, and one thing that solvents have difficulty resisting is evaporating.

Of course, there are products that are fantastic precisely because they consist of artificial materials. For example, rubber boots and condoms. They are both difficult to manufacture from conifers and wool. We just want to humbly emphasize this, given all our harping about wool from fluffy sheep and pine trees growing strong in the bitter cold.

We would also humbly emphasize that if we found any synthetic materials that in our experience would have been better than horsetail hair, wool, cotton, flax and pine, we would have used it. Gladly. But in 166 years, we have not.

Instead of looking for the cheapest materials, we look for the best. Everything so that your time in bed will never be a sweaty, stressful trip between the nightlight and the alarm clock.



The secret difference between minestrone and just a mess of ingredients.

As we said before, it's not hard to build a bed.

The secret to a great bed, however, lies in choosing the right raw materials and successfully combining everything into a harmonious whole. Just as a master chef can turn ordinary ingredients into a masterpiece while others would make it into, well, a very ordinary dish.

Minestrone is an excellent example.

It was enjoyed in Italy long before Buddha, Jesus, or Muhammad wandered the Earth. It is a straightforward, tasty, healthy soup that was vegetarian by the necessity of the day.

The ingredients were neither expensive nor unusual; anyone can make minestrone. All you need is water, yellow onion, carrots, some olive oil, tomatoes, a few teaspoons of oregano, vegetable broth, orzo, salt, black pepper, and possibly some

honey. And then – in the right hands – you have a dish that tastes indescribably delicious and can reward you with health and longevity.

Our work at Hästens follows the same guiding principle.

Our beds are made of northern Swedish pine, which has grown slowly providing close annual rings that, in turn, provide strength and longevity. Our wool comes from carefully selected sheep, our flax and cotton meet rigorous performance criteria, and the horsetail hair is long and strong. They are nature's obvious ingredients, but they are carefully chosen and combined into a happy unity by some of the world's premier bed builders.

Parts are just parts. The secret is to put them together in a way such that the results satisfy both body and soul.

HORSE TAIL HAIR

The feeling of the first night on horsetail hair.
How often do you get to enjoy that?





The alarm clock rings. Then the horsetail tail hair in your mattress jumps up.

Relax, it's totally natural. We have converted each strand of horsetail hair in your mattress into millions of tirelessly stubborn curls. When you stand up, after having cuddled down in the bed all night, the mattress will go back to its lovely, airy shape. And you can enjoy that embracing, relaxing feeling next time you go to bed.

Over and over again.

The secret? We transform the long, smooth hair from the horsetail into spirals with a 100% natural process. Every little hair, therefore, works like a spring, that cooperates with all the other springy layers in your bed. The result is the unbelievably comfortable sleep you'd expect to find in a Hästens bed – where the different parts of your body get even and flexible support. And the curls are permanent enough to keep the mattress as resilient and comfortable throughout its lifespan.

Dear, dear horsetail hair. We think it's the world's best material. You sleep well on it for yet another reason: During millions of years, the horsetail hair has evolved amazingly efficient ventilation properties. It helps to absorb the

warmth and humidity generated by your body. Even as you sleep you'll lose between 0.5 and 1.5 liters of water each night. That's about three glasses of water that need to be dissipated each night. Our horsetail hair can absorb 30% of its own weight in water and still feel completely dry to the touch.

We've made our horsetail hair so fluffy that air can easily circulate around your body and transport the moisture away – and your body can more easily regulate the temperature around it. That increases the possibility of you having a deep, uninterrupted sleep. (And live the next day as the good-natured person you are after having slept like a baby.)

But there is one downside to this: The horsetail hair might help you fall asleep faster because it helps your body get to its optimal sleeping temperature faster. Which means you don't have time to consciously enjoy your bed's amazing cloud-feel for very long.

Luckily nature made sure you'll get sleepy again, every night.

This is how we transform long, strong horsetail hair into durable springs. First, they are carefully boiled and washed with environmentally-friendly soap. Then they are being washed once more. Now the horsetail hair is totally clean, wet and warm. Then they are twisted together into a rope looking like a dreadlock. By deciding the thickness of the rope, how hard it's twisted and the number of twists per meter, we determine the diameter and viability of the "hair spiral". After that, the rope is being dried in heat (sort of like when you dry the hair under a cope at the hairdresser's). How hot and for how long is an important part of our secret formula for optimal durability.

The last step is to make the horsetail hair sterile. Therefore, it's being put into an autoclave oven (the same thing dentists use to sterilize their tools). Karolinska Institute in Stockholm has also stated that after our treatment, the horsetail hair is free from allergenic substances. When the dreadlock has been stored for a secret amount of time, the only thing remaining is to open it up and by hand embed the horsetail hair – which now has decreased in volume – to make your mattress more flexible, airy and cozy. Just like we have been doing for almost 200 years.

Aaaah! Mmmm!
Zzzzz...

Horsetail hair of our finest quality is known for inducing nice sounds. That's why it's being used both in exclusive string instruments and in a certain exclusive bed.



WOOL

Our natural selection of wool.
Striving to keep one step ahead of evolution.





What's special about the Super Sheep? It has springs. Every strand of wool is self-curved and naturally curved such that it functions as a spiral.

If only the longest, curliest, heavy-duty wool were passed on for generations, it would be considerably easier to find the quality that Hästens strives for.

Presenting: the Super Sheep.

Every single hair on the Super Sheep is perfect. It's an impressive 15 centimeters long. It has 5 curls per inch and 47.6 degrees of curvature per millimeter. It looks completely natural, like a spring. Under the microscope, we can see the surface of the fiber is actually a succession of jagged scales that interlock with other wool fibers when ruffled to form a perfectly resilient mat. The strand is exactly 43.5 micrometers thick. Moisture cannot damage it since water molecules go right through it. And it's naturally resistant to fire. Together, these qualities make this super wool the stuff dreams are made of at Hästens.

Oh, and did we mention that Super Sheep require very little food, don't bleat, always come when called, and clip their own wool twice a year.

If only it were that simple.

All the characteristics named above are what we strive for as we search through, pull apart, and pick out the wool fibers that will make it into

a Hästens bed. But nature doesn't make it that easy for us. You see, even evolution has its limits. Where natural selection ends, human selection takes over.

As long as sheep grow wool below our high standards, and as long as the quality of wool varies between the clippings, we need to be there to select the super wool from the good wool. We meticulously seek out and gather up only those wool fibers that are sufficiently curly, scaled and white. They also need to have the right feel. The wool that you will ultimately rest on is always new, never reclaimed. Longer fibers mean better strength, better suspension, better moisture wicking, better air circulation and better thermal insulation, which all contribute to an optimal sleep climate.

And precisely because we are so selective, every bed we make includes wool that could almost come from Super Sheep – even if nature has not yet provided us with them.

The bed that
can change
three-thirds
of your life.

The one-third
when you are
sleeping.

And especially,
the two-thirds
when you're not.

COTTON

How particular are you allowed to be
when mother nature gives you a gift?





White gold.
Considerably nicer to
sleep on than actual gold.

Why Hästens' cotton is so comfortable: We mess with it as little as possible.

According to the history books, humans began cultivating cotton 8,000 years ago, initially in modern-day Mexico. When Columbus (who was the son of an Italian weaver) made landfall in the New World, he met Mayan chiefs in the most beautiful clothes he had ever seen.

Today, there are very few people on the planet who have not dressed in this cool and soft “white gold” at one time or another. Cotton fabric is, undoubtedly, delightful against the skin. It is equally useful in simple clothes as it is in resplendent vestments.

Its characteristics are heavenly: soft on the exterior and pliable, yet still durable. It breathes,

absorbs moisture, and regulates your temperature – making it as perfect in a shirt on a hot summer day as in a bed on a cold winter night.

For us, cotton is an incomparable natural material for making fabric and wadding. We think the fiber is perfect just as it is. Therefore, we do all we can do not to do everything we theoretically could do. That is: treat it, work it over, and over color it. Instead, we barely lift a finger. The cotton for the fabric is combed and carded very carefully, to avoid breaking the fibers. The goal is to have as many of the fibers as possible retain their original length so that they can perform the demanding work that mother nature has planned for them.

How can something so beautiful be so repellent?

If you are human and surrender yourself to the embrace of a Hästens, then, in all likelihood, you will immediately notice how fantastically soft and reassuring the bed feels. This is because the outermost layer of the bed is made of exceptionally fluffy wadding – a natural blend of cotton and wool of magnificent quality. The fibers of cotton and wool are blown together in a special pressure chamber that permanently entwines them. What you feel is an incredibly even and airy mat.

If you are a spark, however, coming into contact with our beds is a distinctly more uncomfortable experience. The cotton wool mixture acts like a firewall. If the cotton wool is exposed to intense

heat, the structure of the wool blocks the oxygen and smothers the fire. (By the way, the cotton wool is equally repellent if you happen to be a particle of dirt.)

Back to humans: The mix of materials is also an important part of the bed's ventilation system, allowing air to circulate around the body, transporting the moisture away, and regulating the temperature. Everything to make you able to sleep cool, dry and deep. And have the opportunity to wake up full of enthusiasm every day.





Hästens beds are built for a long life. The materials that are not used by us are recycled and will have a different life. Somewhere else.

Even a planet wants to wake up refreshed.

Hästens uses only horsetail hair, wool, cotton and flax of the highest possible quality and functionality.

This means that the fibers must have the right length and an intact surface. Not even the most trivial blemish is allowed, for the simple reason that it disturbs the total feeling of your bed.

To fill each mattress with these fine fibers requires great skill. The filling should be plentiful, airy, and provide the exact same feeling everywhere. What is left over is cut off – these surplus fibers can then be sorted and recycled.

Suppliers have told us that this surplus sometimes is sold to other bed manufacturers that fill their mattresses with fibers of varying lengths. (So, even if you end up choosing another bed, it may still contain a small piece of almost-Hästens.)

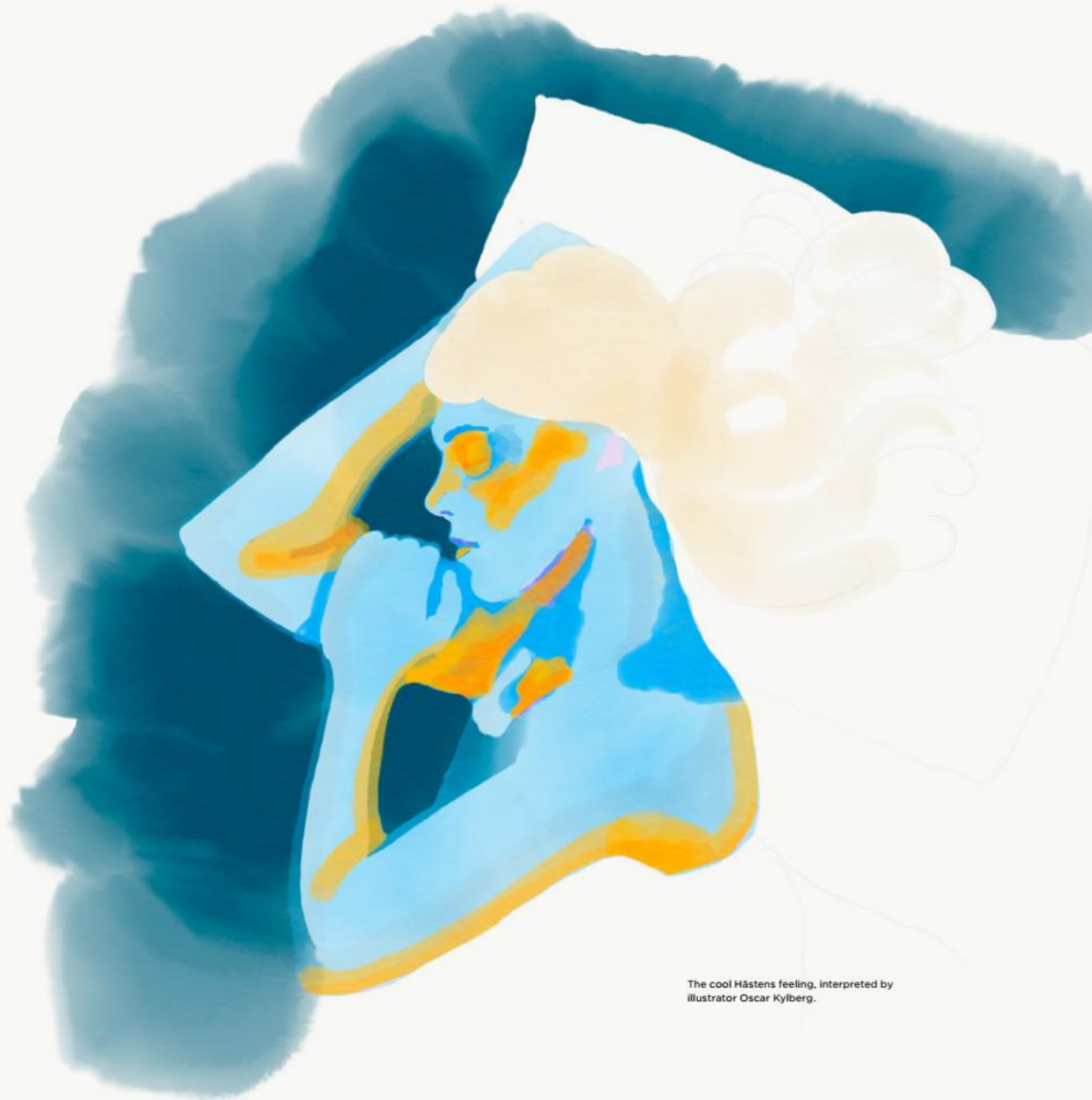
Fire your plastic bed before it fries you.

Your body temperature is key to your quality of sleep. The sooner your bed helps you reduce your temperature, the sooner you can fall asleep. If, in addition, the bed helps you maintain an optimal temperature throughout the whole night, then the chances that you sleep really well increase.

Imagine watching your body through a thermal imaging camera.

If you chose to spend your nights sleeping on a synthetic mattress, the image would be colored red-orange-yellow. That's because when your mattress can't breathe, you get hot. Your increased perspiration quickly makes it moist. In addition to the hygienic aspects, your sleep would most likely be affected by the bed's hot climate within 30-40 minutes.

If, instead, you chose to sleep in a Hästens, the natural, breathable materials would regulate your temperature and transport moisture away. Can you imagine how pleasantly rested you would feel after a cool and comfy night's sleep?




The cool Hästens feeling, interpreted by
illustrator Oscar Kylberg.

FLAX

is good. A lot of flax is a lot better.





Relax with more flax and say goodbye to static.

How can there be static electricity in a bed that is not made of synthetic materials? Simple: Your body brings it there. In fact, you are constantly accumulating static electricity during the day – you don't even need to comb your hair, pet a cat or rub a balloon.

You yourself can accumulate a charge equaling thousands of volts!

Luckily, you can also discharge it from time to time (even though it causes a shock). Reports have shown that carrying a charge over long periods of time can cause headaches, dry mouth, and itching. You can even attract dust particles from the air – something that is particularly detrimental for allergy sufferers.

This is precisely the reason why we build flax into our beds – large quantities of flax, because the more flax there is, the more effectively it diverts and prevents static electricity from occurring. Flax, together with our other natural fibers, is the natural enemy of static electricity thanks to its inherent moisture content. Why? Because water is good at conducting electrons. The whole time you lie in a Hästens, you are effectively "grounded."

Flax not only protects against "lightning", but also against "thunder". In order to prevent sparking sounds and vibrations from ever occurring, we embed a spring system between two strong, resilient flax mats. The flax mat at the bottom is folded around the spring system's metal brace when it is attached to the wooden frame so that it minimizes friction between both metal and metal and wood and metal.

Some bad hair days can be avoided before they begin.

STEEL

that may have been your great-grandfather's scooter.
And maybe will become your great-grandchildren's
self-flying electric car.



**We can't conjure up steelier steel
than what already exists on Earth.**

**But we do know how to
turn it into some of the planet's
most durable springs.**



HERE'S HOW WE DO IT:

- 1** First, we acquire high-quality steel. Up to 80 percent is recycled material – steel is so amazing that it can be recycled many times and still be exactly as good. An excellent start that saves our natural resources.
- 2** Next, we form the steel into a flat wire. We take great care calculating the exact diameter of the wire since this determines the springiness and elastic force. After having assembled and mounted spring systems in beds for over a hundred years, we know precisely how much force is needed to create what we consider to be the optimal level of comfort: the desirable combination of softness and support.
- 3** Now we decide the height of the spiral we will shape. Not too high or the springs become wobbly. But not so low or they lose their bounce.
- 4** Then we determine the exact angle of inclination in the steel spring's spiral ...
- 5** ... and exactly how many spirals it should contain.
- 6** All that remains is to define the diameter of the coil, likewise with great precision.
- 7** When the coil is finished being shaped, we treat it with heat. This alters the metal structure such that the steel spring retains its twirl and elasticity, and returns to its original shape when you get out of bed. The purpose is to make it resilient for a lifetime.
- 8** Finally: the preloading. We place the spiral in a small fabric bag. This so-called pocket is somewhat shorter than the height of the steel spring in order to pre-compress it – i.e. give the spiral just the right amount of stiffness, while always remaining instantly ready to accept the weight of your body. The fabric bag also lets air pass through the bed, which contributes to a healthy sleeping climate.
- 9** Now it's time to combine the steel spring with hundreds (or thousands) of equally springy counterparts into a complete system that still allows each spring to move individually. We have put a lot of care into finding the right space between them, and thus the correct number of springs, for each bed. More is not always better as this can result in reduced lifting force or the risk of springs getting caught on each other and making noise.



What's best for a relationship? Separation.

The key to a harmonious system: All parts work together, while they remain free. Therefore, every single fabric-lined steel spring in a Hästens lives a life of its own. When you press down on some of them, the adjacent ones are barely affected.

The goal is to make it feel like you and your partner are sleeping as if you are each in your own world, always in balance without disturbing each other. Not even if one of you turns over or gets up for a midnight snack.

Naturally enough, this system is called Hästens individual pocket spring system. There is one or

two of these systems in all of our beds. In addition, there is always a so-called Bonnell system with linked spirals at the bottom. Its purpose is to absorb the most intensive load.

All spring systems work together in harmony so that your bed is wonderfully soft on the surface, while it helps your body get the perfect amount of support and relief deep down. Undisturbed. Practically noiseless. Of course, we cannot promise, but maybe it even has a relaxing effect on your relationship.

Hästens does not make compromises on time or materials in order to make the optimal bed. For the top pocket spring system on a 2000T, we use over 1,500 meters of steel wire.

WOOD

We are looking for the smoothest, of the straightest,
of the strongest wooden planks.



The wood in your Hästens bed sprouted about the same time as Albert Einstein's theory of relativity did.

$E=mc^2$. Albert Einstein presented his theory of relativity in 1905. He wrote it on a piece of paper probably manufactured from a fir tree.

And the world was never the same again.

Around this same time, far, far up in northern Sweden, the trees that are part of the framework for the Hästens beds of today were planted. To be specific, it takes up to 120 years before the pines we use are ready to be harvested. At this age, the proud trees measure up to 30 meters high – and if you braved the -20°C cold with snow up to your waist, you could count the growth rings on the stump yourself. The colder the climate, the slower the trees grow, and the denser the rings are. Experienced carpenters select the wood we at

Hästens want the most: straight, even, dimensionally stable and strong planks with no more than three twigs per length.

Skilled carpenters join the extra thick, extra solid planks of these premium pines to a bed frame. In the corners, the planks are joined with finger or dovetail joints, a locked embrace with fantastic strength. Because we want Einstein's whole family to be able to do somersaults in your bed without any trace of frame yielding to mass, energy or gravity.

How long does it last? The oldest Hästens bed we know of that is still being slept in when we last searched was built in 1907. Two years after the theory of relativity was committed to paper.

The Swedish pine that Hästens uses in its bed frames comes from responsibly managed forests that provide environmental and social benefits. We hope future generations of physicists will also be able to take notes on paper. And snuggle down into a bed that helps the brain to get maximum recovery.

FABRIC

Mankind has been weaving fabrics for 9,000 years.
Then, a French revolutionary appeared on the scene.



Long live the bedroom revolution!

The fabric. The weave.

Of everything we fill your bed with, the fabric is what you can see with your eyes. Everything else is hidden underneath it. The contribution of our horsetail hair, wool, wood and steel make to the quality of your sleep and wakefulness is not immediately apparent to the touch. The fabric is another story. The weave, made of superb 100% virgin cotton, will be appreciated by your skin every night.

The man behind Hästens' fine weaving technique never lived in Köping. In order to learn more about him, we have to travel back in time to the barricades of the French Revolution. Monsieur Joseph Marie Jacquard was a petty officer on the side of the uprising, and his gift to posterity was, appropriately enough, a particularly subversive loom.

The main difference between it and the traditional loom is that each individual warp thread can be controlled independently from the others. rately from the movements of other threads up and down. And all this allows designers to create patterns in the fabric with outstanding freedom and quality.

Hästens brings the results to the bedroom.

Jacquard's innovative loom from the eighteenth century lies behind all of Hästens' designs right up to the digital era. Thanks to the advanced jacquard weaving, we can make checks in four hues using


only one blue and one white thread. But on our last design, the old Frenchman's weaving technique fell short. The pattern was quite simply too complicated. But that didn't stop us. When you have people who combine creative vision with experience, obsession and boundless patience, there is always a solution.

No sooner said than done. The weavers and our skilled craftsman pondered the problem together. After countless attempts and prototypes (each with new ways to combine the threads) we finally found the answer that took the jacquard loom to new heights. A technique that could make the Appaloosa's innovative graphic abstraction a reality, with the right colors and hues. A design for our time. A pattern that bestows a sense of movement and development.

And it was the same with Marwari. Here, we were also forced to further develop our weaving technique in order to get the quality we were looking for. If you look closely, you'll see that it's reminiscent of saddle cinches – a nod to Hästens' origin as a saddle-maker.

Together, they serve as evidence of Hästens' unrelenting willingness to make new strides.

The spirit of an old French revolutionary may live in all of us.



**First, the fabric needs to rest.
Then it is your turn.**

Our fixation with fabric continues even after it is weaved and collected on a roll. We want to ensure that it is sewn and mounted with the utmost precision.

Therefore, once we have clipped the fabric for your top mattress, middle mattress or base, we hang it out for at least three days and relax. During this hiatus, tension or skewing will disappear. Only after this, do we work with the fabric.

What difference does waiting a few days make, if it means that your bed will be just a little, little, little, little bit better?

Imagine living
every day
as the most
awake version
of yourself.

Time to address the elephant in the room.

Well, now on page 127 it is time to apologize. To all you brave transport workers, keen decorators, and hard-working movers: It was not our intention to make our beds so “?#@*&%!” heavy. It just happens when you are obsessed with creating the highest possible sleep quality and resolutely refuse to compromise.

Take a Hästens 2000T, for example. It consists of 36.7 kilos of pine, 118.6 kilos of steel, and 47.8 kilos of natural fibers – horsetail hair, wool, cotton and flax. (And – if you will allow us to boast a bit

more – this doesn’t even include the weight of our knowledge).

A total of 203.1 kilos so that you, dear Hästens owners, shall feel almost weightless when you lie on it. One positive side effect of the bed’s weight is that it stays still and quiet.

Why do we make such an effort? Because if every night you get the deepest sleep you can, then you’ll be better equipped with the energy, strength and joy you need to face the trials and tribulations of everyday life. Like having to carry such a “?#@*&%!” heavy bed if the circumstances arise.



Calm down, it isn't quite as bad as this.



**Somebody has
been lying in your
bed 500,000 times
before you get
to do so.**

Nothing can reveal the true stamina of a mattress quite like our Riksrumpa. We refer to this faux derrière as "The National Asset" since it is modeled after the buttocks of the average Swedish adult. It is certainly the highlight of our test lab where it sits down to ensure we live up to our promises.

Our toughest test is pure torture (even for our test manager's patience). The National Asset sits down 500,000 times on our test bed with its "legs" over the side – in the same way that you do before you lie down to go to sleep. Since you normally go to bed once a day, this corresponds to 500,000 days.

That would be 1,370 years.

It's as if the bed had been in daily use since the Middle Ages and the springs had not yielded a single millimeter. Because, if they had, we would have changed the design long ago. Now you understand that Hästens really strives to give you heightened sleep quality and comfort that goes the distance night after night, dream after dream. And awakening after awakening.

Of course, we also meet the highest requirements of leading test institutes. Every aspect of our beds has been tested right down to the molecular level. All of our fabrics, for example, have been awarded Standard 100, product class 1 by Oeko-Tex. It is usually called baby class because it poses one of the toughest health requirements that exist in the furniture industry.

So, if you really want to get to the bottom of mattress quality, you know where to turn.



**Nobody knows how long a
Hästens bed can last.
(We have found one which has been
used for over 90 years.)**

In Sweden, people live longer than in most other places on Earth.

Researchers believe this is because Swedes are reasonably happy people. Perhaps we have less to worry about, and many of us have an active, healthy lifestyle. That's why, on average, men here can expect to wake up 29,585 mornings and women 30,681 mornings.

One more reason why investing in a bed that can last makes good sense.

Now, we certainly don't have records of every bed we've manufactured or where they are today. But the last time we searched, we did find one owner still sleeping in a Hästens bed that was manufactured in 1907. Thus, a bed built 100 years ago, long before the Russian Revolution.

Beds with a long life are naturally good for your wallet, but more importantly, they are good for the planet. This at a time when the world needs environmental sustainability more than ever.

The pine for our bed frames comes from northern Sweden, where conifers can grow up to 400 years old. Such trees deserve respect. In our eyes, a tree like this shouldn't end up as an anonymous paper bag in a grocery store; it should get a new, dignified life. Perhaps as a bed that will last for an additional hundred years until 2118.

When the day comes that the bed will be put to sleep for good, the frame can still be recycled and get yet another start, perhaps this time as pencils for our great-great-grandchildren to sketch their ideas for the future?

While none of us may live as long as a Hästens, it's reassuring to know that its craftsmen have dedicated themselves to help us make the most of every morning we have.

132-233

THE BEDS

WE LIVE FOR

To choose the right bed, we suggest you sleep in it.

On the following pages, we have written many, many words about the differences between our beds. But when it comes to choosing the right one, in the end, only three words matter: Try it out.

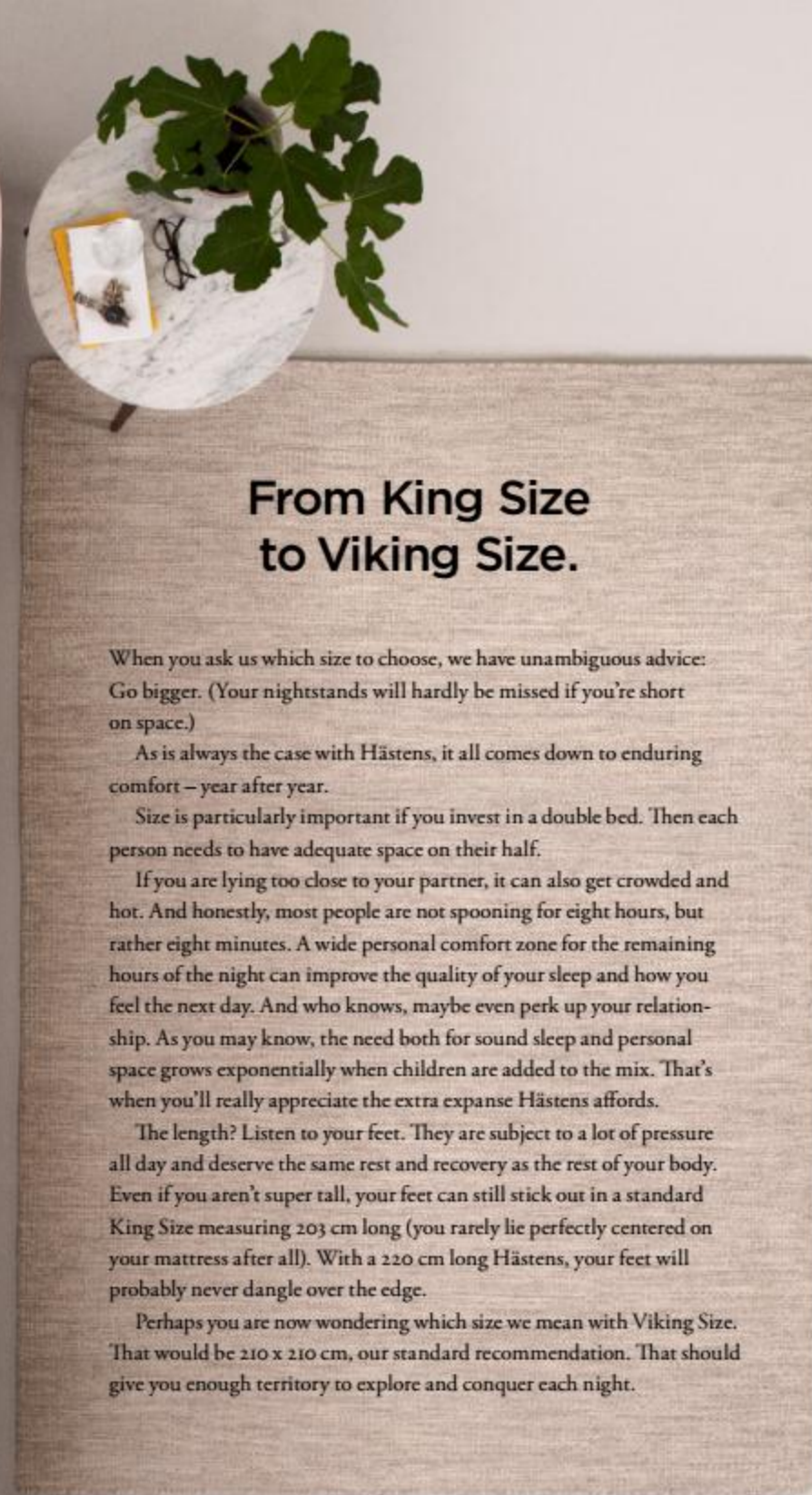
Each Hästens is built with a special purpose in mind. They each have their own personality and specific comfort profile depending on the quantity of materials used, how we assemble them, and the number of layers. If it feels good to you, then it is good; we can't determine which bed will feel best. The question is only how good you want to feel.

Also, there's no such thing as taking too much

time to test a bed that you'll sleep in for the rest of your life. Please, feel free to visit our stores and really try our beds out, i.e. sleep in them. Yes, you're allowed! With a blanket, without a salesperson talking to you. (Unfortunately, however, we will need to wake you up before we close.)

And there is absolutely no rush at all with choosing your Hästens. Come back the next day and try it out again. And the next. The record is a man in England who visited us 24 times before he made his decision. But then he was also very pleased with his choice.

Good night and welcome back whenever you please.



From King Size to Viking Size.

When you ask us which size to choose, we have unambiguous advice: Go bigger. (Your nightstands will hardly be missed if you're short on space.)

As is always the case with Hästens, it all comes down to enduring comfort – year after year.

Size is particularly important if you invest in a double bed. Then each person needs to have adequate space on their half.

If you are lying too close to your partner, it can also get crowded and hot. And honestly, most people are not spooning for eight hours, but rather eight minutes. A wide personal comfort zone for the remaining hours of the night can improve the quality of your sleep and how you feel the next day. And who knows, maybe even perk up your relationship. As you may know, the need both for sound sleep and personal space grows exponentially when children are added to the mix. That's when you'll really appreciate the extra expanse Hästens affords.

The length? Listen to your feet. They are subject to a lot of pressure all day and deserve the same rest and recovery as the rest of your body. Even if you aren't super tall, your feet can still stick out in a standard King Size measuring 203 cm long (you rarely lie perfectly centered on your mattress after all). With a 220 cm long Hästens, your feet will probably never dangle over the edge.

Perhaps you are now wondering which size we mean with Viking Size. That would be 210 x 210 cm, our standard recommendation. That should give you enough territory to explore and conquer each night.

This bed is 300x300 cm.
Read more on pages 212-213
about customizing your bed.

HÄSTENS
2000T



Hästens 2000T is the epitome of everything a Hästens bed should be. Its exclusive quality and uncompromising sleep comfort is difficult to challenge. (We know no one who succeeded. Apart from ourselves, each time we improved it a little bit.)

HÄSTENS 2000T

[tu: θaʊzənd ti:]

**The apex of our knowledge,
craft and experience – brought
together in what we proudly call
the consummate bed.**

To lie down on a Hästens 2000T bed is to rest on Hästens' entire history. The bed is the culmination of what we have learned during our 166-year quest for the best sleep possible: from profound insights into the human body and unique knowledge of materials to five generations of craftsmanship. It contains 34 layers and over 200 kilograms of carefully selected natural materials. Each individual layer is well thought-through and refined practically down to the last horsetail hair.

We want to give you the very best possible sleep quality, night after night. Plus the energy you need to be the best version of yourself, day after day.

Three separate spring systems act together to give your entire body the support it needs. The bed adapts smoothly to your movements and small

changes in sleep position, while your sleeping partner remains undisturbed.

The history of Hästens 2000T is one of constant refinement. For instance, in recent years we have partitioned the horsetail hair into more and thinner layers, with even thinner layers of cotton and wool between them. They are artfully assembled by hand. Our master craftsmen use experience to guide them as they carefully ruffle the fibers together. As you might guess, this requires a significant investment in time. However, this age-old technique is well worth the effort. The goal is to produce the dream-like, airy, and pliable feel of a Hästens 2000T – making it quite simply a masterpiece of comfort.



HÄSTENS 2000T

203.1 kilograms of perfection.

MIDDLE MATTRESS

Elevates the concept of sleep comfort. As if you are lying on a cloud. Consists of:

- 2 layers of bolster fabric from exceptionally durable virgin cotton.
- 4 layers of hand-teased A-lyx horsetail hair.
- 10 layers of cotton and wool.
- 1 pocket spring system, 18 cm high, with springs that act individually and never hook into each other.
- 4 reinforced corner springs (covered in soft flax), to ensure both comfort and stability when you sit on the edge.
- Reinforced edge springs along all sides, to prevent you from rolling out of the bed and to make it easier to get up.
- Piping that gives the mattress its elegant shape.
- Meticulously placed side-stitching, which increases both stability and pliability.
- 4 robust handles on the long sides to make it easy to turn the mattress.

BASE

Unwaveringly stable. Absorbs and distributes the pressure from your body over the entire surface. Consists of:

- 1 layer of bolster fabric of outstandingly durable virgin cotton.
- 1 layer of hand-teased A-lyx horsetail hair.
- 2 layers of cotton and wool.
- 1 pocket spring system, 8 cm high, with springs that act individually and never hook into each other.
- 2 layers of flax that provide sound insulation and conduct static electricity away.
- 1 Bonnell spring system, 13 cm high, with machine-knotted coil springs.
- 1 frame in solid, slow-growing Swedish pine with finger joints, 16.8 cm high.



- 1 layer of cotton lining that protects the bed from below.
- Stylish corner fittings in brushed aluminum.
- Minimum 4 sturdy legs, recessed to prevent you from stubbing your toes.
- 1 personal nameplate (can be engraved as required).

BJX LUXURY TOP MATTRESS

Natural air conditioning. The final touch of perfection as Hästens 2000T gently embraces you. Consists of:

- 2 layers of bolster fabric of outstandingly durable virgin cotton.
- 2 layers of cotton and wool.
- 2 layers of hand-teased A-lyx horsetail hair.
- 1 layer of cotton and wool.

YOUR BODY IS UNIQUE. YOUR 2000T CAN BE TOO.

You can customize your Hästens bed so that it's just right for you. There are over 20,000 possible combinations. Find out more on pages 234-279.

SIZES

- Adjust the length and width in 0.5 cm increments (maximum size is 400 cm).
- Full base or split base.
- Square, rectangular or round shape.

FIRMNESS

- Choose between soft, medium, firm and extra firm.

COLORS

- Choose between 15 different original fabrics.

ACCESSORIES

- Top mattresses, headboards, legs, bed skirts, pillows, down quilts, bed linen, etc.

WEIGHT: 203.1 kg (180×210 cm)
HEIGHT: 55 cm (without legs)
NUMBER OF LAYERS: 34

HÄSTENS
HERLEWING



Three carefully combined spring systems work together to support your body in balance, even when your partner turns over, reaches for the phone, or gets up for a midnight snack. So you wake up in balance. And remain in balance throughout your day.

HÄSTENS

HERLEWING

[hərle:vɪŋ]

Three spring systems to take you to a higher dimension of relaxation.

Imagine that you are weightless. You don't need to tense a single muscle. Your entire body is in perfect harmony. This is the idea with Hästens Herlewing. With three interacting spring systems plus 31 hand-wrapped layers of our very finest natural materials, we want to take your sleep quality to a new level.

Why? So we can help you feel more wakeful in the morning and provide the energy you need to be at your best all day. (The name is no accident: Herlewing means "waking up" in Afrikaans.)

Hästens Herlewing is based on the same advanced spring system that we developed for Hästens 2000T. The springs in the middle mattress are fitted one by one and react individually to pressure.

The effect is unparalleled: Two people in the same bed each lie in their own sphere, together yet independent without their movements affecting each other.

But that's not all. There are two more spring systems in the base of the bed. Each is carefully adapted to the other and together they provide deep support to every part of your body. No matter how you lie, the bed adapts precisely to your body's needs.

Selecting the finest wool, cotton and horsetail hair for your Herlewing bed is just the start. We assemble these materials by hand using a unique layer-by-layer technique refined for over a century by our skilled master bed builders. It's that combination of uncompromising material selection with uncompromising craftsmanship that produces the softness and unique pliable firmness of our beds.

A gravity-defying sensation that will change your view of comfort forever.



HÄSTENS HERLEWING

173.4 kilograms that put you in perfect balance.

MIDDLE MATTRESS

The unique layer-upon-layer technology transports moisture away efficiently, leaving you to rest fully relaxed in a precisely balanced sleep climate.

Consists of:

- 2 layers of bolster fabric from exceptionally durable virgin cotton.
- 4 layers of hand-teased J horsetail hair.
- 12 layers of cotton and wool.
- 1 pocket spring system, 15 cm high, with springs that act individually and never hook into each other.
- 4 reinforced corner springs (covered in soft flax), to ensure both comfort and stability when you sit on the edge.
- Reinforced edge springs along all sides, to prevent you from rolling out of the bed and to make it easier to get up.
- Meticulously placed side-stitching, which increases both stability and pliability.
- 4 robust handles on the long sides to make it easy to turn the mattress.

BASE

Distributes your weight over the entire surface and gives Herlewing an almost bottomless feel.

Consists of:

- 1 layer of bolster fabric of outstandingly durable virgin cotton.
- 1 layer of cotton and wool.
- 1 Bonnell spring system, 8 cm high, with machine-knotted coil springs.
- 2 layers of flax that provide sound insulation and conduct static electricity away.
- 1 Bonnell spring system, 13 cm high, with machine-knotted coil springs.



- 1 frame in solid, slow-growing Swedish pine with finger joints, 16.8 cm high.
- 1 layer of cotton lining that protects the bed from below.
- Minimum 4 sturdy legs, recessed to prevent you from stubbing your toes.

BJX LUXURY TOP MATTRESS

Natural air conditioning. The final touch of perfection as Hästens Herlewing gently embraces you.

Consists of:

- 2 layers of bolster fabric of outstandingly durable virgin cotton.
- 2 layers of cotton and wool.
- 2 layers of hand-teased A-lyx horsetail hair.
- 1 layer of cotton and wool.

YOUR BODY IS UNIQUE. YOUR HERLEWING CAN BE TOO.

You can customize your Hästens bed so that it's just right for you. There are over 20,000 possible combinations. Find out more on pages 234-279.

SIZES

- Adjust the length and width in 0.5 cm increments (maximum size is 400 cm).
- Full base or split base.
- Square, rectangular or round shape.

FIRMNESS

- Choose between soft, medium, firm and extra firm.

COLORS

- Choose between 14 different original fabrics.

ACCESSORIES

- Top mattresses, headboards, legs, bed skirts, pillows, down quilts, bed linen, etc.

WEIGHT: 173.4 kg (180×210 cm)

HEIGHT: 51 cm (without legs)

NUMBER OF LAYERS: 34

HÄSTENS
EALA



When our master bed builders skillfully combine the finest horsetail hair, wool and cotton in balanced layers, something incredible is created: silent air conditioning. Moisture is transported away and fresh air circulates around your body. A natural way to create a fantastic environment for sleep.

HÄSTENS
EALA
[ee:la]

**The bed that unites
weightiness with fluffiness.
And night with day.**

In Hawaii, people say “E ala!” to wake each other. After your first night in a Hästens Eala, you will understand the reason for this choice of name. You’ll feel pleasantly refreshed as if you had woken from a deep slumber on a remote island.

How do we create such a refreshing climate for sleep? Using 100 kilograms of horsetail hair, wool, cotton and flax in multiple layers, each carefully joined by hand. Those natural materials are then wrapped in 26 square meters of blue-check cotton fabric, woven with a technique that we have been refining since the 19th century.

As with all of our beds, Hästens Eala is meticulously designed to keep you cool and dry. During the night the horsetail hair, wool and flax absorb the moisture produced by your body. The moisture is then transported away layer by layer and escapes through the sides of the bed. At the same time,

fresh air circulates around each fiber enveloping your body. A sophisticated way to use the organic properties of nature’s best materials.

To make the experience complete, Eala has two spring systems featuring flax-reinforced corners and dual side-stitching. The goal is that you feel total relaxation when you lie down. You begin to sink slowly into the bed’s harmonious embrace with practically every contour of your body receiving precisely the support it needs. The objective is to help you fall quickly into a deep, undisturbed sleep, and maintain the optimal temperature all night.

However, the sensation we most want you to have sleeping in a Hästens Eala is not experienced until the next day when you feel more wakeful, in tune and positive. Or, put simply, a bit more like yourself.



HÄSTENS EALA

148.8 kilograms of climate control.

MIDDLE MATTRESS

Delightful softness combined with harmonic stability – plus an exquisite temperate sleeping climate. Consists of:

- 2 layers of bolster fabric from exceptionally durable virgin cotton.
- 2 layers of hand-teased J horsetail hair.
- 8 layers of cotton and wool.
- 1 pocket spring system, 15 cm high, with springs that act individually and never hook into each other.
- 4 reinforced corner springs (covered in soft flax), to ensure both comfort and stability when you sit on the edge.
- Reinforced edge springs along all sides, to prevent you from rolling out of the bed and to make it easier to get up.
- Meticulously placed side-stitching, which increases both stability and pliability.
- 4 robust handles on the long sides to make it easy to turn the mattress.

BASE

Forms the basis of the floating and wonderfully relaxing feeling you get in an Eala. Consists of:

- 1 layer of bolster fabric of outstandingly durable virgin cotton.
- 1 layer of cotton and wool.
- 2 layers of flax that provide sound insulation and conduct static electricity away.
- 1 Bonnell spring system, 13 cm high, with machine-knotted coil springs.
- 1 frame in solid, slow-growing Swedish pine with finger joints, 9.2 cm high.



- 1 layer of cotton lining that protects the bed from below.
- Minimum 4 sturdy legs, recessed to prevent you from stubbing your toes.

BJX LUXURY TOP MATTRESS

Natural air conditioning. The final touch of perfection as Hästens Eala gently embraces you.

Consists of:

- 2 layers of bolster fabric of outstandingly durable virgin cotton.
- 2 layers of cotton and wool.
- 2 layers of hand-teased A-lyx horsetail hair.
- 1 layer of cotton and wool.

YOUR BODY IS UNIQUE. YOUR EALA CAN BE TOO.

You can customize your Hästens bed so that it's just right for you. There are over 20,000 possible combinations. Find out more on pages 234-279.

SIZES

- Adjust the length and width in 0.5 cm increments (maximum size is 400 cm).
- Full base or split base.
- Square, rectangular or round shape.

FIRMNESS

- Choose between soft, medium, firm and extra firm.

COLORS

- Choose between 14 different original fabrics.

ACCESSORIES

- Top mattresses, headboards, legs, bed skirts, pillows, down quilts, bed linen, etc.

WEIGHT: 148.8 kg (180x210 cm)

HEIGHT: 48 cm (without legs)

NUMBER OF LAYERS: 27

HÄSTENS
MARANGA



Maranga's middle mattress: your ticket to a higher level of comfort. It is like putting a cloud on another cloud – and then adding yet another cloud (the top mattress). As you can see, we're aiming for the stars when it comes to softness, firmness and pliability.

HÄSTENS

MARANGA

[maranɡa]

Welcome to sleep nirvana.

When you lie in a Hästens Maranga you're immediately embraced with a sense of peace and serenity. The bed is the very definition of responsive pliability. It receives you with a gentle hug as you sink into it and then, as soon as you get up, its resilient surface follows your body, returning to its firm and even resting state. As though it had not been lain upon.

Our Maranga provides that identical sensation each time you return to it, from your first night to the nine thousand one hundred and twenty-fifth night.

The higher ambitions we set for our beds are reflected in our manufacturing process. We spare no expense or effort in pursuit of perfection.

We use nature's finest materials: horsetail hair, wool, cotton and flax. The materials are assembled by hand using our unique layer-by-layer technique developed and refined for over a century in our workshop.

Side-stitching completes the work. That alone takes two hours per middle mattress to complete by hand. Skilled master craftsmen follow our iconic fabric pattern to the letter – or, to be precise, the square – to place each and every stitch in precisely the right place.

The name "Maranga" comes from the Maori word for "wake up". It's not only designed to give you a good night's sleep, but to also ensure you feel awake throughout your day.



HÄSTENS MARANGA

124.5 kilograms of tireless comfort.

MIDDLE MATTRESS

Welcomes you with a soft and firm hug, a combination made possible by the unique layer-upon-layer technology. Consists of:

- 2 layers of bolster fabric from exceptionally durable virgin cotton.
- 2 layers of hand-teased J horsetail hair.
- 8 layers of cotton and wool.
- 1 pocket spring system, 13 cm high, with springs that act individually and never hook into each other.
- 4 reinforced corner springs (covered in soft flax), to ensure both comfort and stability when you sit on the edge.
- Reinforced edge springs along all sides, to prevent you from rolling out of the bed and to make it easier to get up.
- Meticulously placed side-stitching, which increases both stability and pliability.
- 4 robust handles on the long sides to make it easy to turn the mattress.

BASE

Extra support and a slightly firmer feel thanks to a Bonnell spring system using thicker thread. Consists of:

- 1 layer of bolster fabric of outstandingly durable virgin cotton.
- 1 layer of cotton and wool.
- 1 Bonnell spring system, 8 cm high, with machine-knotted coil springs.
- 1 layer of flax that provides sound insulation and conducts static electricity away.

- 1 frame in solid, slow-growing Swedish pine with finger joints, 9.2 cm high.
- 1 layer of cotton lining that protects the bed from below.
- Minimum 4 sturdy legs, recessed to prevent you from stubbing your toes.



BJX LUXURY TOP MATTRESS

Natural air conditioning. The final touch of perfection as Hästens Maranga gently embraces you. Consists of:

- 2 layers of bolster fabric of outstandingly durable virgin cotton.
- 2 layers of cotton and wool.
- 2 layers of hand-teased A-lyx horsetail hair.
- 1 layer of cotton and wool.

YOUR BODY IS UNIQUE. YOUR MARANGA CAN BE TOO.

You can customize your Hästens bed so that it's just right for you. There are over 20,000 possible combinations. Find out more on pages 234-279.

SIZES

- Adjust the length and width in 0.5 cm increments (maximum size is 400 cm).
- Full base or split base.
- Square, rectangular or round shape.

FIRMNESS

- Choose between soft, medium, firm and extra firm.

COLORS

- Choose between 14 different original fabrics.

ACCESSORIES

- Top mattresses, headboards, legs, bed skirts, pillows, down quilts, bed linen, etc.

WEIGHT: 124.5 kg (180×210 cm)
HEIGHT: 40 cm (without legs)
NUMBER OF LAYERS: 26

HÄSTENS
SUPERIA



Watch out, this bed will fool you every evening.
Your eyes tell you that the base of Superia bed is only
37 cm off the floor. But once you lie down and close
your eyes, that expanse grows. To infinity, in fact.

HÄSTENS SUPERIA

[supe:ri:a]

The best frame bed we have ever built.

In our opinion, the feeling that comes from resting in a Hästens Superia can be described in a single word: bottomless. In the absence of resistance or pressure from below, you will sink almost weightless into this bed. Just deep enough to keep your spine straight, whether you are lying on your side, stomach or back.

Our most amazing frame bed so far. Built to make you relax and wake up infinitely rested.

What you may not realize is that there is an entire universe of bed-making artistry beneath the surface: a double spring system, 14 layers of natural materials carefully selected and combined, all resting on a sturdy wooden frame. This, unfortunately, is a universe that you probably never will see. After we arrange this exquisite ensemble

of horsetail hair, cotton, wool, flax, steel and wood, we hide it forever beneath a cloak of the finest fabric.

Like any masterpiece, the frame makes all the difference. Ours is built from northern Swedish pine, which grows particularly slowly and is therefore extra dense. Finger joints bind the four corners in a permanent embrace – entirely without screws or nails. The frame's weight and craftsmanship make the bed both sturdy and deafeningly quiet. (Not unlike the Swedes who build it.)

Our goal with Superia was to evoke a feeling of bottomless comfort that will make you forget you're even lying on it. That's how Hästens helps make the most of your nights and the infinite possibilities that each new day brings.



HÄSTENS SUPERIA

128.6 kilograms of infinity.

BASE

Dual high spring system and multiple layers of different natural materials working together to make your body feel more or less weightless.

Consists of:

- 1 layer of bolster fabric of outstandingly durable virgin cotton.
- 2 layers of cotton and wool.
- 1 layer of hand-teased horsetail hair.
- 1 pocket spring system, 15 cm high, with springs that act individually and never hook into each other.
- 4 reinforced corner springs (covered in soft flax), to ensure both comfort and stability when you sit on the edge.
- Reinforced edge springs along all sides, to prevent you from rolling out of the bed and to make it easier to get up.
- 2 layers of flax that provide sound insulation and conduct static electricity away.
- 1 Bonnell spring system, 13 cm high, with machine-knotted coil springs.
- 1 frame in solid, slow-growing Swedish pine with finger joints, 16.8 cm high.
- 1 layer of cotton lining that protects the bed from below.
- Minimum 4 sturdy legs, recessed to prevent you from stubbing your toes.



BJX LUXURY TOP MATTRESS

Natural air conditioning. The final touch of perfection as Hästens Superia gently embraces you. Consists of:

- 2 layers of bolster fabric of outstandingly durable virgin cotton.
- 2 layers of cotton and wool.
- 2 layers of hand-teased A-lyx horsetail hair.
- 1 layer of cotton and wool.

YOUR BODY IS UNIQUE. YOUR SUPERIA CAN BE TOO.

You can customize your Hästens bed so that it's just right for you. There are over 20,000 possible combinations. Find out more on pages 234-279.

SIZES

- Adjust the length and width in 0.5 cm increments (maximum size is 225 cm).
- Full base or split base.
- Square, rectangular or round shape.

FIRMNESS

- Choose between soft, medium, firm and extra firm.

COLORS

- Choose between 14 different original fabrics.

ACCESSORIES

- Top mattresses, headboards, legs, bed skirts, pillows, down quilts, bed linen, etc.

WEIGHT: 128.6 kg (180x210 cm)

HEIGHT: 37 cm (without legs)

NUMBER OF LAYERS: 17

HÄSTENS
EXCEL



Every thought needs a breeding ground. Every idea needs room in which to grow. Every person needs a safe place on Earth to gather the strength and inspiration for the next adventure (even if that's sitting with a spreadsheet all day). That is why we created Hästens Excel. Your own personal charging station.

HÄSTENS EXCEL

[eksel]

Firm and silent. An energy-boosting sanctuary.

Imagine waking up every day, opening your eyes, and feeling fully charged and awake. Ready to live up to your full potential from morning till night. This was our aim when we created Hästens Excel: your platform for a better tomorrow. It's built to last a lifetime with a solid pine frame and double spring system as well as 14 layers of carefully combined horsetail hair, wool, cotton and flax. Lose yourself in its welcoming embrace whenever you feel the need to return and recharge your batteries.

The bed is responsive and pliable, while at the same time being a little less cushy on the surface than our other models. It provides a slightly firmer feel. Perfect for those who prefer to lie *on* the bed rather than *in* it (and perhaps who have

previously chosen a bed that was just too firm). And, as with all Hästens beds, you sleep at the right temperature for your body, thanks to our unique blend of natural materials designed for optimal air circulation.

The spring systems and wooden frame are both encased in flax, which prevents any of the components from rubbing against each other. This serves two purposes. The flax not only makes the bed quiet, it also prevents static electricity from building up. And should you or your partner be wearing nylon sleepwear, the flax will dissipate the static electricity generated by the synthetic material. Rest assured, even if Excel is your charging station, we promise it will never give you any static.



HÄSTENS EXCEL

121.7 kilogram energy source.

BASE

Pliable but stable, giving what we call a direct feeling of the bed. Consists of:

- 1 layer of bolster fabric of outstandingly durable virgin cotton.
- 2 layers of cotton and wool.
- 1 layer of hand-teased horsetail hair.
- 1 pocket spring system, 13 cm high, with springs that act individually and never hook into each other.
- 4 reinforced corner springs (covered in soft flax), to ensure both comfort and stability when you sit on the edge.
- Reinforced edge springs along all sides, to prevent you from rolling out of the bed and to make it easier to get up.
- 2 layers of flax that provide sound insulation and conduct static electricity away.
- 1 Bonnell spring system, 13 cm high, with machine-knotted coil springs.
- 1 frame in solid, slow-growing Swedish pine with finger joints, 16.8 cm high.
- 1 layer of cotton lining that protects the bed from below.
- Minimum 4 sturdy legs, recessed to prevent you from stubbing your toes.



BJX LUXURY TOP MATTRESS

Natural air conditioning. The final touch of perfection as Hästens Excel gently embraces you.

Consists of:

- 2 layers of bolster fabric of outstandingly durable virgin cotton.
- 2 layers of cotton and wool.
- 2 layers of hand-teased A-lyx horsetail hair.
- 1 layer of cotton and wool.

YOUR BODY IS UNIQUE. YOUR EXCEL CAN BE TOO.

You can customize your Hästens bed so that it's just right for you. There are over 20,000 possible combinations. Find out more on pages 234-279.

SIZES

- Adjust the length and width in 0.5 cm increments (maximum size is 225 cm).
- Full base or split base.
- Square, rectangular or round shape.

FIRMNESS

- Choose between soft, medium, firm and extra firm.

COLORS

- Choose between 14 different original fabrics.

ACCESSORIES

- Top mattresses, headboards, legs, bed skirts, pillows, down quilts, bed linen, etc.

WEIGHT: 121.7 kg (180x210 cm)

HEIGHT: 36 cm (without legs)

NUMBER OF LAYERS: 17

HÄSTENS
MARQUIS



Do you dream of owning a Hästens bed? Here you have it. The original. It may be our simplest model but it doesn't lack any of Hästens' vision. (A word of warning, however, once you experience how a Marquis affects the quality of your days, it may serve as a gateway bed to our heavier models.)

HÄSTENS

MARQUIS

[ma:ki:]

One hundred percent Hästens, in all its simplicity.

Marquis includes everything that made Hästens one of the world's most sought-after and iconic bed brands. It reflects our obsession with creating beds to make you sleep well – or rather, that make you more awake. For it's how you feel all night that determines how you feel all day.

Horsetail hair, wool and cotton are crafted by hand in a unique layer-upon-layer technique by our highly skilled bed builders. Craftsmanship makes this bed responsive and pliable with just the right degree of firmness. The natural fibers provide another dimension of comfort as they transport moisture away and allow air to circulate so that you can remain cool and dry all night long.

A double spring system helps every part of your body get the support it needs to relax. Each pocket

spring reacts independently, which means that your partner can move without disturbing you.

Flax is used in the base to provide sound insulation and to conduct static electricity away. Sturdy finger joints connect planks of slow-growing, northern Swedish pine to form the solid wood frame. And, of course, everything is wrapped in our wonderfully soft fabric made from durable cotton.

Marquis boasts one more ingredient: 166 years of bed-building expertise. It may be our simplest model, but it lacks none of the tradition, craftsmanship or quality materials found in every Hästens bed. That's why we are convinced: Try Marquis for just 15 minutes and it will change your view of sleep forever.



HÄSTENS MARQUIS

106.5 kilograms of the genuine Hästens experience.

BASE

A clean and low profile with a double spring system that is on the firmer side. Consists of:

- 1 layer of bolster fabric of outstandingly durable virgin cotton.
- 2 layers of cotton and wool.
- 1 layer of hand-teased horsetail hair.
- 1 pocket spring system, 13 cm high, with springs that act individually and never hook into each other.
- 4 reinforced corner springs (covered in soft flax), to ensure both comfort and stability when you sit on the edge.
- Reinforced edge springs along all sides, to prevent you from rolling out of the bed and to make it easier to get up.
- 2 layers of flax that provide sound insulation and conduct static electricity away.
- 1 Bonnell spring system, 6.7 cm high, with machine-knotted coil springs.
- 1 frame in solid, slow-growing Swedish pine with finger joints, 9.2 cm high.
- 1 layer of cotton lining that protects the bed from below.
- Minimum 4 sturdy legs, recessed to prevent you from stubbing your toes.



BJX LUXURY TOP MATTRESS

Natural air conditioning. The final touch of perfection as Hästens Marquis gently embraces you.

Consists of:

- 2 layers of bolster fabric of outstandingly durable virgin cotton.
- 2 layers of cotton and wool.
- 2 layers of hand-teased A-lyx horsetail hair.
- 1 layer of cotton and wool.

YOUR BODY IS UNIQUE. YOUR MARQUIS CAN BE TOO.

You can customize your Hästens bed so that it's just right for you. There are over 20,000 possible combinations. Find out more on pages 234-279.

SIZES

- Adjust the length and width in 0.5 cm increments (maximum size is 225 cm).
- Full base or split base.
- Square, rectangular or round shape.

FIRMNESS

- Choose between soft, medium, firm and extra firm.

COLORS

- Choose between 14 different original fabrics.

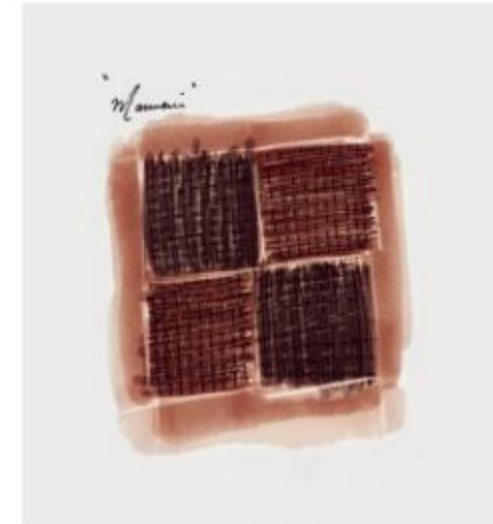
ACCESSORIES

- Top mattresses, headboards, legs, bed skirts, pillows, down quilts, bed linen, etc.

WEIGHT: 106.5 kg (180x210 cm)

HEIGHT: 28 cm (without legs)

NUMBER OF LAYERS: 17



The same check for 40 years began to seem a little square.

Hästens' famous check pattern turned 40 in April 2018. We wanted to celebrate. But what do you get for the bed that has everything?

After a little thought we came up with the perfect present: to create contemporary interpretations of the check by the internationally recognized design duo, Bernadotte & Kylberg. The result was two innovative beds:

Marwari and Appaloosa.

Bernadotte & Kylberg's philosophy is an ideal match with Hästens. We are driven by creating beds that last. They are driven by creating iconic design that lasts, while always keeping function and the end-user in focus.

We got a lot of the inspiration for the new beds from Hästens' origin as saddle makers (that's how we started before we switched gears and focused on beds). This is evident in Marwari's fabric, with an advanced tactile structure that resembles saddle cinches. Even the names have equestrian origins. Other inspiration came from Cubism.

The development work took two years and included creating a new weaving technique. We also took our detail work to an even higher level.

Read more about Marwari and Appaloosa on the following pages. We feel that we have added two more classics to our stable.

HÄSTENS

MARWARI

by BERNADOTTE & KYLBERG



Hästens tradition with a contemporary twist.
Exquisite leather trim. Ornate seams. Our own
weave technique. You could call it excessive.
But if you're looking for top-notch, or perhaps
over-the-top-notch, this is definitely the bed for you.

HÄSTENS

MARWARI

by BERNADOTTE & KYLBERG

[marva:ri]

The perfect bed, stylishly refined to the smallest detail.

What happens when you lock two award-winning designers in a room with a Hästens 2000T? Like all great designers, they see it from a new perspective and discover new possibilities.

For this 2000T makeover, our master bed builders teamed up with the award-winning design duo Bernadotte & Kylberg. Together they created a completely new bed that is improved down to the tiniest detail. And we really mean the tiniest detail – after all they took two years to perfect it.

Hästens Marwari pays homage to our heritage as master saddle makers. For the fabric, we were inspired by the intricate structure of saddle girth – that's the band that passes under the equine to keep the saddle in place. To get this fabric to the desired pliability, an entirely new weaving technique had to be developed. And that's just one example of how obsessed this team was with perfection.

The rich brown color, with its natural luster, evokes images of the majestic Marwari horses of India (hence the name). The beautiful color of the leather trim was achieved with natural plant dyes

and completes the design of this bed as a sophisticated oasis of sleep.

Marwari is also as comfortable as it is elegant. The triple spring system and 31 layers of selected natural materials act together to provide different aspects of your body with the support and comfort they need. Essential for those who want to be perfectly rested. Every night. And every day.



A footnote: Legs designed exclusively for Marwari. Made of birch and leather. Ø 5.6 cm. Height: 9 cm.



HÄSTENS MARWARI

by BERNADOTTE & KYLBERG

203.1 kilograms of refined perfection.

MIDDLE MATTRESS

Sleep comfort on a heavenly level. As if you are lying on a cloud. Consists of:

- 2 layers of bolster fabric from exceptionally durable virgin cotton.
- 4 layers of hand-teased A-lyx horsetail hair.
- 10 layers of cotton and wool.
- 1 pocket spring system, 18 cm high, with springs that act individually and never hook into each other.
- 4 reinforced corner springs (covered in soft flax), to ensure both comfort and stability when you sit on the edge.
- Reinforced edge springs along all sides, to prevent you from rolling out of the bed and to make it easier to get up.
- Piping that gives the mattress an elegant shape.
- Meticulously placed side-stitching, which increases both stability and pliability.
- 4 robust handles on the long sides to make it easy to turn the mattress.

BASE

Unwaveringly stable. Absorbs and distributes the pressure from your body over the entire surface. Consists of:

- 1 layer of bolster fabric of outstandingly durable virgin cotton.
- 1 layer of hand-teased A-lyx horsetail hair.
- 2 layers of cotton and wool.
- 1 pocket spring system, 8 cm high, with springs that act individually and never hook into each other.
- 2 layers of flax that provide sound insulation and conduct static electricity away.
- 1 Bonnell spring system, 13 cm high, with machine-knotted coil springs.



- 1 frame in solid, slow-growing Swedish pine with finger joints, 16.8 cm high.
- 1 layer of cotton lining that protects the bed from below.
- Minimum 4 sturdy legs, recessed to prevent you from stubbing your toes.
- 1 personal nameplate (can be engraved as required).

BJX LUXURY TOP MATTRESS

Natural air conditioning. The final touch of perfection as Hästens Marwari gently embraces you. Consists of:

- 2 layers of bolster fabric of outstandingly durable virgin cotton.
- 2 layers of cotton and wool.
- 2 layers of hand-teased A-lyx horsetail hair.
- 1 layer of cotton and wool.

YOUR BODY IS UNIQUE. JUST LIKE YOUR MARWARI CAN BE.

You can customize your Hästens bed so that it's just right for you. There are over 20,000 possible combinations. Find out more on pages 234-279.

SIZES

- Adjust the length and width in 0.5 cm increments (maximum size is 400 cm).
- Full base or split base.
- Square, rectangular or round shape.

FIRMNESS

- Choose between soft, medium, firm and extra firm.

ACCESSORIES

- Top mattresses, headboards, legs, bed skirts, pillows, down quilts, bed linen, etc.
- For Marwari, there are also custom-designed accessories.

WEIGHT: 203.1 kg (180×210 cm)
HEIGHT: 55 cm (without legs)
NUMBER OF LAYERS: 34

HÄSTENS

APPALOOSA

by BERNADOTTE & KYLBERG



When we first introduced Hästens 2000T series and our checkered fabric, we pushed the boundaries of our bed design. Today, our blue-check pattern has become the symbol of Hästens' excellence in many parts of the world. So, what's next? Push that boundary one step further, of course.

HÄSTENS

APPALOOSA

by BERNADOTTE & KYLBERG

[ap^alu:sa]

The opposite of understatement.

For 166 years, Hästens has been working to bring sleep quality to a higher level.

In 1978, we also pushed the limits of what a bed could look like when we launched our iconic blue check. More than a style statement, this pattern is a precise template for the craftsmen who build the bed. The fabric's pattern functions as a template so that our seams and fabric can be perfectly aligned every time.

Today, the blue-check pattern has become a well-known symbol of Hästens' unique philosophy: to build a bed that is so in sync with your body at night that it helps make you feel more awake during the day. Because we believe that is the only way to judge the real quality of your sleep.

To celebrate its 40th anniversary, we challenged

the award-winning design duo Bernadotte & Kylberg to work with us on creating a modern interpretation of the blue-check pattern and to combine this with Hästens 2000T's extreme quality and sleep comfort.

The results exceeded even our expectations and may well be a new classic in 40 years' time. The sophisticated pattern, inspired by Cubism, creates a sense of depth while elevating the personality of the 2000T to a whole new level. This advanced fabric pattern is produced in two layers and required us to develop a completely new weaving technique that we also use on Marwari.

The bed is named after the American horse-breed, Appaloosa, known for its beautiful colors and irregular spots.



HÄSTENS APPALOOSA

by BERNADOTTE & KYLBERG

203.1 kilograms of poise.

MIDDLE MATTRESS

Elevates the concept of sleep comfort. As if you are lying on a cloud. Consists of:

- 2 layers of bolster fabric from exceptionally durable virgin cotton.
- 4 layers of hand-teased A-lyx horsetail hair.
- 10 layers of cotton and wool.
- 1 pocket spring system, 18 cm high, with springs that act individually and never hook into each other.
- 4 reinforced corner springs (covered in soft flax), to ensure both comfort and stability when you sit on the edge.
- Reinforced edge springs along all sides, to prevent you from rolling out of the bed and to make it easier to get up.
- Piping that gives the mattress an elegant shape.
- Meticulously placed side-stitching, which increases both stability and pliability.
- 4 robust handles on the long sides to make it easy to turn the mattress.

BASE

Unwaveringly stable. Absorbs and distributes the pressure from your body over the entire surface. Consists of:

- 1 layer of bolster fabric of outstandingly durable virgin cotton.
- 1 layer of hand-teased A-lyx horsetail hair.
- 2 layers of cotton and wool.
- 1 pocket spring system, 8 cm high, with springs that act individually and never hook into each other.
- 2 layers of flax that provide sound insulation and conduct static electricity away.
- 1 Bonnell spring system, 13 cm high, with machine-knotted coil springs.



- 1 frame in solid, slow-growing Swedish pine with finger joints, 16.8 cm high.
- 1 layer of cotton lining that protects the bed from below.
- Minimum 4 sturdy legs, recessed to prevent you from stubbing your toes.
- 1 personal nameplate (can be engraved as required).

BJX LUXURY TOP MATTRESS

Natural air conditioning. The final touch of perfection as Hästens Appaloosa gently embraces you.

Consists of:

- 2 layers of bolster fabric of outstandingly durable virgin cotton.
- 2 layers of cotton and wool.
- 2 layers of hand-teased A-lyx horsetail hair.
- 1 layer of cotton and wool.

YOUR BODY IS UNIQUE. YOUR APPALOOSA CAN BE TOO.

You can customize your Hästens bed so that it's just right for you. There are over 20,000 possible combinations. Find out more on pages 234-279.

SIZES

- Adjust the length and width in 0.5 cm increments (maximum size is 400 cm).
- Full base or split base.
- Square, rectangular or round shape.

FIRMNESS

- Choose between soft, medium, firm and extra firm.

ACCESSORIES

- Top mattresses, headboards, legs, bed skirts, pillows, down quilts, bed linen, etc.
- For Appaloosa, there are also custom-designed accessories.

WEIGHT: 203.1 kg (180×210 cm)
HEIGHT: 55 cm (without legs)
NUMBER OF LAYERS: 34

BED:	2000T	MARWARI	APPALOOSA	HERLEWING	EALA	MARANGA	SUPERIA	EXCEL	MARQUIS
BED TYPE (excl. top mattress)	Middle mattress + base	Middle mattress + base	Middle mattress + base	Middle mattress + base	Middle mattress + base	Middle mattress + base	Base	Base	Base
FIRMNESS	Soft, medium, firm, X-firm + combined firmnesses	Soft, medium, firm, X-firm + combined firmnesses	Soft, medium, firm, X-firm + combined firmnesses	Soft, medium, firm, X-firm + combined firmnesses	Soft, medium, firm, X-firm + combined firmnesses	Soft, medium, firm, X-firm + combined firmnesses	Soft, medium, firm, X-firm + combined firmnesses	Soft, medium, firm, X-firm + combined firmnesses	Soft, medium, firm, X-firm + combined firmnesses
WEIGHT*	203.1 kg	203.1 kg	203.1 kg	173.4 kg	148.8 kg	124.5 kg	128.6 kg	121.7 kg	106.5 kg
HEIGHT (excl. legs)	55 cm	55 cm	55 cm	51 cm	48 cm	40 cm	37 cm	36 cm	28 cm
BOLSTER FABRIC	100% cotton	100% cotton	100% cotton	100% cotton	100% cotton	100% cotton	100% cotton	100% cotton	100% cotton
STRETCH FABRIC	Double elastic ring-spun cotton	Double elastic ring-spun cotton	Double elastic ring-spun cotton	Double elastic ring-spun cotton	Double elastic ring-spun cotton	Double elastic ring-spun cotton	Double elastic ring-spun cotton	Double elastic ring-spun cotton	Double elastic ring-spun cotton
PIPING	Yes	Yes	Yes						
SIDE-STITCHING	Yes	Yes	Yes	Yes	Yes	Yes			
NUMBER OF LAYERS (incl. top mattress)	34	34	34	34	27	26	17	17	17
FILLING The layers contain different amounts of materials	Middle mattress: 4 layers of hand-teased A-lyx horsetail hair, 10 layers of cotton and wool Base: 1 layer of hand-teased A-lyx horsetail hair, 2 layers of cotton and wool, 2 layers of flax	Middle mattress: 4 layers of hand-teased A-lyx horsetail hair, 10 layers of cotton and wool Base: 1 layer of hand-teased A-lyx horsetail hair, 2 layers of cotton and wool, 2 layers of flax	Middle mattress: 4 layers of hand-teased A-lyx horsetail hair, 10 layers of cotton and wool Base: 1 layer of hand-teased A-lyx horsetail hair, 2 layers of cotton and wool, 2 layers of flax	Middle mattress: 4 layers of hand-teased J horsetail hair, 12 layers of cotton and wool Base: 1 layer of cotton and wool, 2 layers of flax	Middle mattress: 2 layers of hand-teased J horsetail hair, 8 layers of cotton and wool Base: 1 layer of cotton and wool, 2 layers of flax	Middle mattress: 2 layers of hand-teased J horsetail hair, 8 layers of cotton and wool Base: 1 layer of cotton and wool, 1 layer of flax	Base: 1 layer of hand-teased horsetail hair, 2 layers of cotton and wool, 2 layers of flax	Base: 1 layer of hand-teased horsetail hair, 2 layers of cotton and wool, 2 layers of flax	Base: 1 layer of hand-teased horsetail hair, 2 layers of cotton and wool, 2 layers of flax
NUMBER OF STEEL SPRINGS (of which this amount of pocket springs)**	2,340 (1,970)	2,340 (1,970)	2,340 (1,970)	1,750 (970)	1,380 (970)	1,380 (970)	1,360 (1,000)	1,360 (1,000)	1,360 (1,000)
SPRING SYSTEM 1	Pocket, 18 cm, individually sprung	Pocket, 18 cm, individually sprung	Pocket, 18 cm, individually sprung	Pocket, 15 cm, individually sprung	Pocket, 15 cm, individually sprung	Pocket, 13 cm, individually sprung	Pocket, 15 cm, individually sprung	Pocket, 13 cm, individually sprung	Pocket, 13 cm, individually sprung
REINFORCED CORNER SPRINGS	Yes	Yes	Yes	Yes	Yes	Yes	Yes	Yes	Yes
REINFORCED EDGE SPRINGS	Yes	Yes	Yes	Yes	Yes	Yes	Yes		
CORNER PADDING	Flax	Flax	Flax	Flax	Flax	Flax	Flax	Flax	Flax
SPRING SYSTEM 2	Pocket, 8 cm, individually sprung	Pocket, 8 cm, individually sprung	Pocket, 8 cm, individually sprung	Bonnell, 8 cm	Bonnell, 13 cm	Bonnell, 8 cm	Bonnell, 13 cm	Bonnell, 13 cm	Bonnell, 6.7 cm
REINFORCED CORNER SPRINGS	Yes	Yes	Yes						
CORNER PADDING	Flax	Flax	Flax	Flax	Flax	Flax			
SPRING SYSTEM 3	Bonnell, 13 cm	Bonnell, 13 cm	Bonnell, 13 cm	Bonnell, 13 cm					
FRAME IN PINE	16.8 cm high with finger joints	16.8 cm high with finger joints	16.8 cm high with finger joints	16.8 cm high with finger joints	9.2 cm high with finger joints	9.2 cm high with finger joints	16.8 cm high with finger joints	16.8 cm high with finger joints	9.2 cm high with finger joints
UNDERLINING	Cotton	Cotton	Cotton	Cotton	Cotton	Cotton	Cotton	Cotton	Cotton
CORNER FITTINGS	Brushed aluminum								
PERSONALLY ENGRAVED PLAQUE	Yes	Yes	Yes	Yes					
EMBROIDERED PRODUCT NAME	Yes	Yes	Yes	Yes	Yes	Yes	Yes	Yes	Yes
OEKO-TEX 100 CERTIFIED	Yes	Yes	Yes	Yes	Yes	Yes	Yes	Yes	Yes
LATEX-FREE	Yes	Yes	Yes	Yes	Yes	Yes	Yes	Yes	Yes

*Refers to a 180x210 cm bed. Weight may vary depending on size and firmness. ** Refers to a 180x210 cm bed.

HÄSTENS
VIVIDUS



What happens when Hästens takes bed building to an extreme level? Maybe the best bed in the universe. Conceived and created just because we can.

HÄSTENS
VIVIDUS

[vividəs]

**We're told God created
the world in seven days.
It takes nine times longer
to create a Vividus.**

Actually, nine weeks is just the tip of the iceberg.

Truth be told, nobody can build a handmade bed like this from scratch in just nine weeks. It actually took us thousands of weeks to create Vividus. That's 166 years with five generations of master craftsmen each refining their predecessor's work to take the art of bed construction to a higher level. What began as upholstered cushions for

horse-drawn carriages has, step by step, evolved into the bed you see before you. And after all that time, we're still giving it our all to help people arrive refreshed and alert for wherever life's journey takes them.

On the following pages, we will tell you the story of Vividus.

Please read them.



HÄSTENS VIVIDUS

The most important thing for a bed builder is to never slumber.

It's no coincidence that Vividus became a reality in Köping, Sweden.

The bed is entirely handmade by Hästens' foremost master builders, constructed from the finest natural materials. It is our homage to the uncompromising obsession of quality, care and passion that has been our hallmark through the years.

We chose to build a bed to best ourselves. Not because it was easy, but because it was difficult. Striving to bring wakefulness to the next level drew on every bit of skill and experience we possessed. It required complete faith in our founder's advice: Good enough is never good enough. Even the best can be improved, if only by one small detail. And in the end, we proved him right as we pushed comfort and rejuvenation beyond what even we thought was possible.

This is world-class excellence. It is knowledge and skill that refuses to rest.

The Vividus project is much like space exploration. Space science invests enormous resources in something that seems to disappear into space. Yet the innovation it took to get there remains here on Earth in the form of revolutionary advances

in material science, health and medicine, energy solutions, and computer technology.

Vividus will never become our bestseller – in all honesty, it is too expensive. But it is our ambition that this bed will benefit all our customers in the same way that space exploration has. The innovations and lessons learned from Vividus will eventually find their way into the rest of our product range.

When it comes to bed filling, horsetail hair is as close to perfect as nature gets, with characteristics developed over millions of years. But we found other ways to improve it. For instance, the horsetail hair can still be slightly better by being a little longer. And naturally curling it into durable and springy spirals.

A Vividus takes this to the extreme: Its horsetail hair measures 30 to 40 centimeters long. If you're a symphony-goer then you're already a fan. That's because this is the same type of hair professionals use to string the finest bows for the double bass.

To explain Vividus' journey we've taken you to a small village in Sweden, the symphony, and outer space. All to convey our tireless dedication to perfection.



HÄSTENS VIVIDUS

**If you want to travel quickly,
travel alone.**

**If you want to travel far,
travel together.**

In the northern half of Sweden, there are only 4.8 residents per square kilometer. When neighbors are this sparse, the importance of cooperation and friendship is self-evident.

Where we live, teamwork is a necessity. In sports, culture and politics, we work towards a common agenda more often than not. Perhaps we appreciate more than most the importance of choosing your travel companions wisely if you want to go the distance.

For us, perfection is our destination and Vividus is our journey. It is manufactured by a team that is truly exceptional, even by Hästens' standards. Nine master craftsmen have been selected for the Vividus team. Set apart, in a secluded corner of our factory, they join bed frames, sew side-stitches, and attach spiral springs with precision down to the millimeter. They work closely together, side by side. Like the Bonnell springs in Vividus, they support and strengthen each other.

These men and women know their trade. They take pride in every oak dowel and side-stitch. Each has been with us for a very long time. They began as apprentices and went on to construct our regular range as master craftsmen. Now they are creating one of the world's best handmade beds and

teaching their younger colleagues how to become the masters of tomorrow.

They have also taken their professional journey together. They're a close-knit group who have known each other for years. Most have gone to school together and some were even born in the same maternity ward. Together, they are Hästens' greatest resource and pride.

You'll find Vividus has plenty of everything except mistakes. If one stitch, spring or joint of wood is anything less than perfect, we do exactly what is required – which is often to redo the entire bed from scratch. On a shelf behind the masters stands a lonely leg of oak. If you look very carefully at the top of the leg, you can just make out a crack. It is barely visible to the naked eye, and the bed would be as solid and reliable anyway. But it was enough to keep this leg from leaving our factory. To do otherwise would be unthinkable.

Speaking of legs and accuracy: Vividus is always assigned five legs. At least. There are actually versions that have up to ten legs, all to provide maximum stability and durability.

Vividus is not for everyone. But if you want a bed to help you go the distance, look no further.



HÄSTENS VIVIDUS

To sew a bed.

It's not until you realize that the nearly 300 kilograms of bed beneath you, built from northern Swedish pine and premium steel, is mostly bound together by thread that you begin to share the master craftsmen's admiration for his simplest tool.

The sewing needle.

However, this is not your ordinary sewing needle. It is 30 cm long and has a point on both ends. It is used to anchor all layers found inside a Vividus middle mattress horizontally to the sides of the bed. One could claim that the bed's quality is literally hanging by a thread. It binds together the flax felt that dampens sound and static electricity to the cotton, the wool, and the hand-spun mats of horsetail hair. It is also thread that keeps our springs in place – everything is held together by a thread and is hand-sewn.

The thread provides strength in addition to natural flexibility. And it is often one single thread that goes around the entire bed. Once the needle disappears into the side of the mattress it is up to the craftsman's instincts to navigate through the filling and pocket springs and arrive at precisely the right exit point. This process takes one person

four days. And if the only thing that remains to complete the side-stitching at quitting time is to tie up the thread, then it will wait until the next day. One mistake at this point would require the entire process to be redone. With stakes that high, you want a good night's sleep to be at your best.

Vividus top mattresses do not have zippers. They never need to be opened. And they're sewn with a special diamond pattern with freestanding seams that ensure the extra-long horsetail hair reaches where it should and adjusts to your bodily movements. No sharp angles or corners should hinder the horsetail hair from moving freely and evenly.

Finally. Our iconic blue-check cotton fabric stitched in place over the entire magnificent ensemble. It is taken from the very same roll of fabric that encases the bed frame and the top mattress. This way we can be absolutely certain that the blue-and-white color hues are exactly the same on all parts of the bed.

Perhaps you think that all of this needlework for a single Vividus is rather extreme. Well then, you're starting to get the point.



Our mission
since 1852:
to create beds
that you feel a
benefit from
twenty-four
hours a day.

A hard bed provides support. As long as you don't have buttocks, a lower back, or shoulders.

Yes, we know that bodies are not perfectly straight. We also know that the parts that stick out will wind up bearing all our weight if we sleep on, say, a floor. Despite this, why is it so exasperatingly easy to select a bed that is too hard?

It's not only because some folks (Martin Luther?) believed that sleeping on hard surfaces builds character. The real culprits are the words we use to describe beds. They're tricky. In the language of beds, the word "support" is often used as a surrogate for "hard" i.e. something positive when you actually mean the opposite. And "soft" is confused with a "hammock."

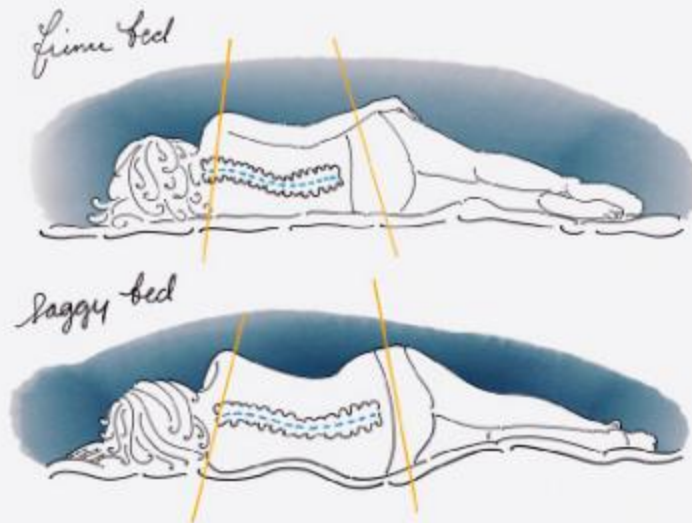
Neither extreme is good for sleeping. The fact is that your back also ends up in the wrong position if you are lying on something too soft. So, it is extremely important to choose the level of firmness that is just right for you.

To that end, we have two pieces of advice:

1) Lie down. In the right bed, your body sinks just the right amount so that your spine, neck, and trachea end up in a straight line. The bed fills in the blanks so that your weight is evenly distributed, and all parts of your body are supported, for example, your lower back when you're lying on your back. You'll know it when you feel it because your entire body will relax, and you'll experience the euphoric feeling of floating as if on clouds.

2) Try it out. Try it out. Try it out. And then try it out again. Dispense with the labels. Forget your preconceptions about how hard or soft your new bed needs to be. Instead, let your body decide – it's often a much better judge than your brain.

And you can relax, our sleep coaches in the Hästens stores will not get tired of you trying out mattresses. They have the same level of perseverance as the springs in our beds.



Some things to think about when you buy your next bed.

Buying a new bed is an investment in sleep, but above all in well-being. The bed's ability to contribute to comfortable sleep affects the quality of your day. So take good time before making this important choice.

Here are some thoughts that may help with your decision. Start by thinking about what your current bed could be better at. What do you miss, what characteristics do you want to increase or decrease? Softer, firmer, higher, wider? Your way of sleeping and your movement pattern during sleep are more important when choosing a bed than you might think: Do you sleep on your side, back, stomach or all the above (which is likely) during the night?

However, choosing a bed can also be about values, in which direction you want our world to go.

"I WANT TO SLEEP ON NATURAL MATERIALS."

This is the most common reason for switching to a Hästens. Then you've really come to the right place. Hästens lives to create maximum sleep comfort by combining natural materials, each of which are painstakingly selected for quality.

All Hästens beds consist of natural materials. The only thing you need to do is try out which of our models you prefer. Each of them has its own personality and specific feel. But Hästens' obsession with perfection is evident in each one.

"I AM TOO HOT AT NIGHT."

This can result from what's on your bed as much as what's in your bed. If your blanket, sheets and/or pillow are made of tightly woven or synthetic materials, then it is almost like sleeping in a plastic bag – in other words, sweaty. That is because these materials cannot breathe well or effectively transport moisture away.

That's why at Hästens we offer the ultimate combination where the different parts, both above and below you, breathe and work together to keep you cool, comfortable and rested. Our beds are made of natural, airy materials (plus our unique layer-upon-layer technique) to help your body regulate temperature. Our well thought-out range of bed linens and accessories in lightweight natural materials further enhance the bed's characteristics.

"LOVE MY BED, BUT IT HAS BECOME OLD."

If you once slept well, but the bed now more resembles a hammock, then it's important to think back to how the bed used to feel. If you can recall the firmness, then start by trying a Hästens of the same level. (Good to know: We only use high-quality materials for your Hästens to support you for many decades, so that you will not have to change your bed all the time.)

Also, think about what annoys you with your old bed. Is it perhaps too short, too high or too low? Are the legs too far out so you stub your toes? Put demands on us when you try out your new bed. We are not 100% satisfied until you are.

"I FEEL PAIN WHEN I SLEEP."

Many people experience pain in their shoulder or lower back when they sleep (some even say it feels like a bruise). Absolutely unnecessary, if you ask us. Unfortunately, it's far too easy to get used to what you have and accept an uncomfortable bed – even if it detracts from your rest.

All Hästens beds are built to make you feel... nothing at all. Just a relaxing sense of weightlessness. We want to achieve that through even pressure relief, that is, when the support is the same throughout your body. No matter what position you sleep in.

Try lying down on your side in a Hästens 2000T, for example, and experience what it's like sinking into the bed just enough to make your spine straight – without pressure on your shoulder or hip. That's what Hästens means with pliability.

"NOTHING IS REALLY WRONG. BUT I'VE HEARD ABOUT HÄSTENS."

It's great that you may spend a third of a 24-hour day in a bed you like. But how awake do you usually feel during the remaining two thirds? A Hästens bed is built to provide you with the highest possible sleep quality every night so that you can live as the best and happiest version of yourself every day. That's Hästens' goal. Perhaps it's worth upgrading your bed and see what happens?

"I HAVE SLEPT IN A HÄSTENS AT A HOTEL."

If you liked the experience at a hotel, be sure to snap a picture of the model you slept in. If you didn't think to do that, then perhaps you can remember the look: Was there a middle mattress? How high was it? You are also welcome to visit our stores to test your way to your dream bed.

According to our experience, one night in a Hästens is enough to wake you up to a new paradigm of sleep. (Tips for hotel owners: Having Hästens in the rooms might just change your guests' view of your hotel.)

**Be careful what you wish for.
We will build beds exactly as you request.**



No matter which model you fall for, anything is possible with Hästens. Which is fortunate since no two clients ever seem to want exactly the same bed. Whether you're a Hollywood celebrity, oriental princess, or just a regular bed connoisseur, you'll want your Hästens bed to have its own personal twist. And because we manufacture each of our

beds by hand, we're happy to accommodate.

If the tallest man in the world called us in Köping (he is claimed to be 251 centimeters barefoot) and wanted to order a new bed, then no problem. Like all our beds, we would build it according to his specifications right down to the last half a centimeter.

Over the years we've been called upon to provide customized beds for pets, planes and ocean-going vessels. But even if you aren't the tallest man in the world, nor have an ocean-going vessel tied up at the jetty, there is still good reason to consider making your bed a little more your bed.

Have a look at the following pages. Select the

color, legs, shape (we build both round and polygonal beds). If you want to sleep extra high or maybe extra low, that's how we'll build it – according to your wishes. There are over 20,000 options for manufacturing a Hästens. So take the opportunity and build your own. (After which, you too can claim to be one of the bed builders at Hästens.)



Buy a Hästens for your adult children. Before they turn three.

Does it really make sense to get children a premium bed right after they leave the crib? After all, children sleep well on just about anything, don't they? And could it be worth the price?

Answers: Yes, no and yes.

Children are as good at sleeping as they sometimes are at breaking things. But a Hästens is built to be unrelentingly pliable and durable. Even if they jump on it week after week, year after year, together with all their siblings and friends (imaginary and real). We want you to avoid changing beds all the time.

All our components are certified according to Standard 100 by Oeko-Tex, product class 1. It is the baby class, one of the toughest health requirements that exist in the furniture industry. Children's beds with foam rubber mattresses also contain the solvents such mattresses are made from. In a world filled with plastic and synthetic materials, a natural bed becomes an organic oasis for your child.

A Hästens is also a bed that is easy to grow with. For example, start with a Marquis twin bed without legs, certainly low enough for small children. Then you place it on short legs and gradually buy longer legs. Presto, the bed grows with your child.

(Bonus: If your child periodically wants to sleep in your bed and forces you out of your own, you always have another sensible bed to escape to. And wake up well rested in.)

Your child gets the exact same benefits from sleeping in a Hästens as you do: healthy, natural materials and good ergonomics — in short, all the prerequisites for high-quality sleep and increased wakefulness. It's a gift that can keep giving from preschool all the way through university.

Since the bed is built to last well into adulthood, it might be the wisest investment you'll ever make. And wouldn't it make a nice moving-out present when the time comes?

Deep sleep round trip. At the hotel.

Find the energy to arrive in good time to the luxurious breakfast buffet. Find the energy to visit all floors of the museum. Find the energy to spot a fake concert ticket from a real one.

Find the energy to run to yet another store, before dinner. Wouldn't it be nice to come back to the hotel and find a delightful treat from Hästens under the little chocolate praline?





**They copy our checks.
They copy our name.
How come no one copies
our beds?**

You should see all the strange blue-check copies, the misspelled nameplates, and the unsuccessful wadding experiments that we discover from time to time around the world. It sometimes gives us the feeling that Hästens beds are the most plagiarized in the world.

At least when seen from the outside. To keep up with us on the inside is obviously too difficult.

Although we wish that more would try. We are serious. The more companies that contribute to making the world more rested, and therefore a happier place, the more everyone would gain.

So a challenge to those of you who are only scraping the surface: Come on now, you can do better than that!

ORIGINAL FABRICS CATEGORY A

Fabrics made in 100% cotton jacquard.

The bolster fabrics we use are selected for their superb level of quality, softness, and breathability. The fabrics are available in a range of timeless classic and modern future-classic designs, with stylish beauty to be found no matter what your choice. They can be applied to both Hästens beds and top mattresses, as well as our headboards, headboard slipcovers, and bed skirts.



Hästens fabrics.

Hästens fabrics and textiles are created according to very high-quality standards. We use pure, natural and durable materials, woven to our own specifications to be as breathable as possible.



Silver Grey Check



Silver Beige Check



Solid Royal Navy Check



Solid White Check

Exclusively for Hästens 2000T and Vividus.



Gold Check



Taupe Check



Solid Grey Check



Solid Black Check



Solid Brown Check



Solid Sand Check



Solid Pearl Check



S, 12

**MERINO WOOL FABRICS
CATEGORY B**

Fabrics made in 100% Merino wool.

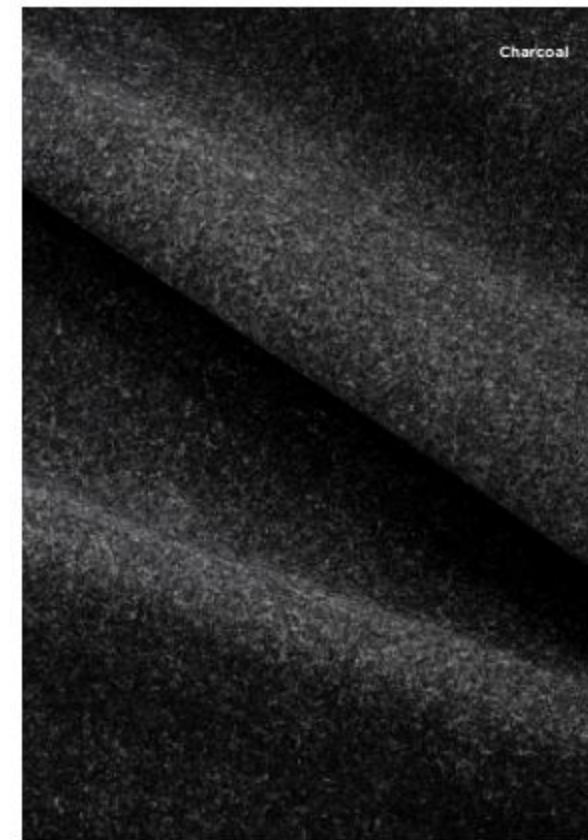
Merino wool comes from the Merino sheep. It has the same characteristics as regular wool in that it deflects moisture and adjusts to the climate. However, Merino wool has finer fibers and is curly, which makes it extra soft. And just like regular wool it has natural anti-bacterial properties since its fibers are so thin bacteria have a hard time attaching to them.

Applicable for Hästens headboards, headboard slipcovers, and straight bed skirts.

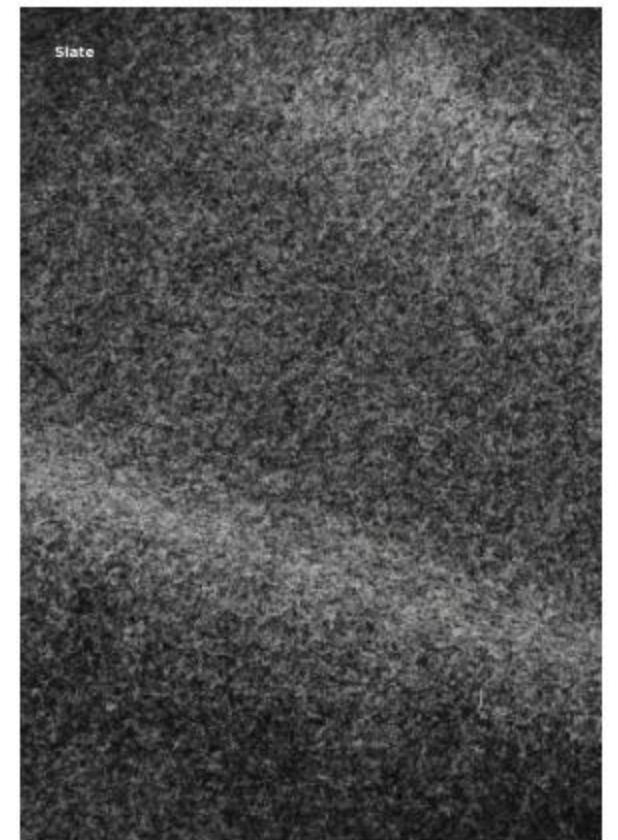
More colors are available on request.



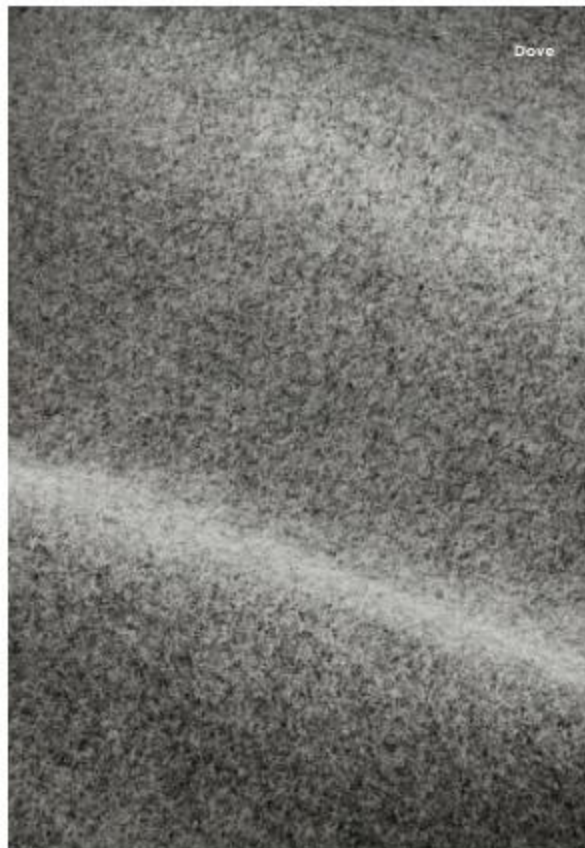
Night Sky



Charcoal



Slate



Dove



Mahogany

CANVAS FABRICS CATEGORY C

Fabrics made in 100% cotton.

Canvas is not only an excellent material for oil painting. Its thick-threaded weave and robust demeanor also make it an excellent choice for dressing headboards and headboard slipcovers, as well as for making bed skirts. That's because canvas is both amazingly sturdy and durable.

Applicable for Hästens headboards, headboard slipcovers, and bed skirts.



Navy



Brown



White



Blue Check



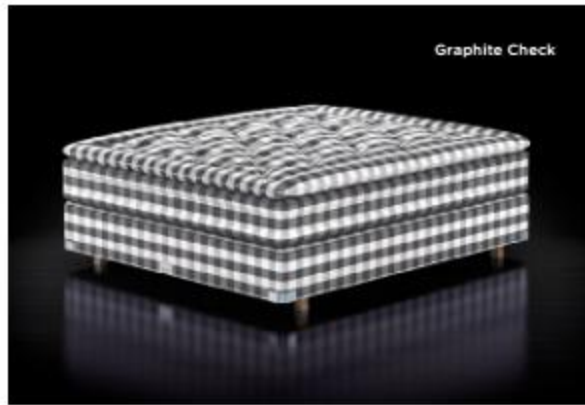
Black Check



Solid White Check



Solid Grey Check



Graphite Check



Silver Grey Check



Solid Black Check



Solid Brown Check



Silver Beige Check



Gold Check



Solid Sand Check



Solid Pearl Check



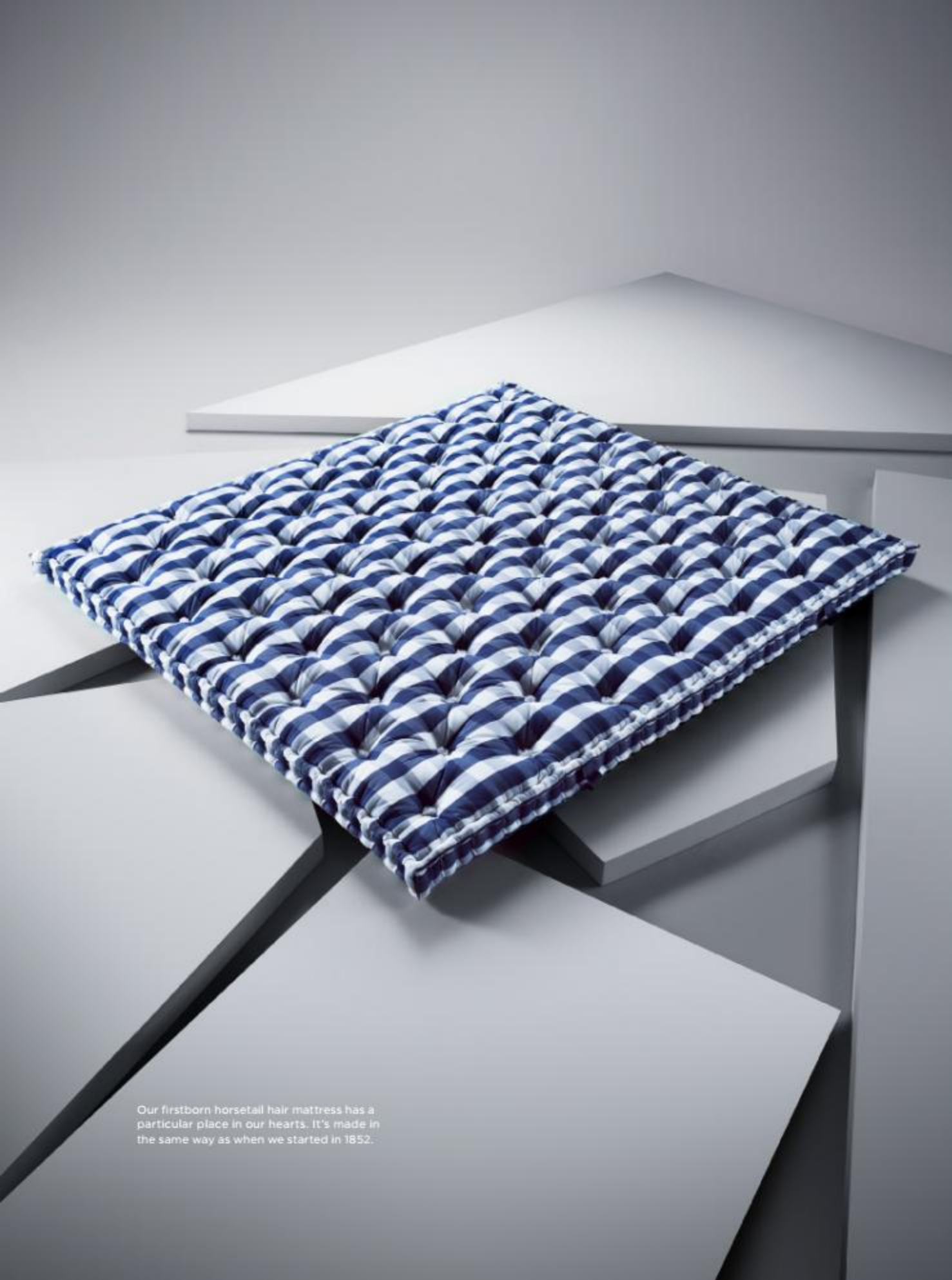
Taupe Check



Solid Royal Navy Check



S. 12



Our firstborn horsetail hair mattress has a particular place in our hearts. It's made in the same way as when we started in 1852.

Why can you still buy Hästens' very first horsetail hair mattress?

Because in the 166 years since we stuffed our first mattress, we haven't found any padding material that is better. Horsetail hair is nature's magic, with properties developed over millions of years that no test laboratory has yet been able to further evolve.

The mattress is filled with millions of springy spirals of our finest horsetail hair, sewn and tasselled by hand. Our experienced bed masters have been refining this technique for five generations in our hometown of Köping. Perfect for anyone who

appreciates a lovely, firm and airy feel to their bed.

You can choose between two versions: TM4 and TM8. (TM stands for "tagelmadrass", Swedish for horsetail hair mattress, and the number stands for the height in centimeters.)

The most common use is as a top mattress on one of our beds.

Hurry and get yours, although we do expect to be selling them for at least the next 166 years.



**HÄSTENS VIVIDUS
TOP MATTRESS**

Filled with seven layers of cotton, wool and extra-long horsetail hair of our very highest quality, selected exclusively for Vividus.

**HÄSTENS BJX LUXURY
TOP MATTRESS**

Filled with cotton, wool and high-quality horsetail hair.

**HÄSTENS BJ
TOP MATTRESS**

Filled with cotton, wool and soft, springy and flexible horsetail hair of excellent quality.

**HÄSTENS BV
TOP MATTRESS**

Filled with thick, soft cotton and wool.

Hästens TM mattress

Filled with genuine horsetail hair and cotton of our highest quality. Padded, sewn and tufted completely by hand with techniques that honor the legacy of nineteenth century master saddle makers. Available in two heights: 4 cm (TM4) and 8 cm (TM8).

As we see it, not even a Hästens bed is completely perfect if it lacks a Hästens top mattress.

Many of those who spend their nights in a Hästens describe it as falling asleep and waking up in an embrace. The last piece of the puzzle for achieving this sensation is the top mattress.

Hästens top mattresses are developed with the ambition to elevate your sleep comfort to a completely new dimension, not least thanks to the softness of the surface. It is the softness you feel closest to your body. That it is so sumptuous is due, in part, to the fact that the padding consists of natural materials of our highest quality and, in part, because it is extremely smooth.

One look and you can see; we quilt your top

mattress in a very special way. Breaking with industry tradition, we do not use straight seams. That's because straight seams lead to sharp angles which lead to corners that the padding has difficulty reaching. Instead, we sew in a special diamond pattern with soft waves so that the padding reaches everywhere uniformly and follows your body's movements.

The top mattress is also a clear part of the bed's layer-upon-layer effect, which helps to effectively wick moisture away and regulate your body temperature. With a mattress cover made of cotton, you'll keep your bed fresh for a long time.

THOUGHTFUL

ACCESSORIES

234-279

COMPLETE YOUR NATURAL HÄSTENS BED
WITH NATURAL ACCESSORIES.

Our accessories are manufactured with the same uncompromising philosophy as our beds: Only the very best is good enough. Something we strive to achieve through meticulous accuracy, genuine craftsmanship and immense passion. And pure natural materials that can meet our quality standards.

With Hästens accessories, you will receive the full Hästens' experience, and thus enjoy the very best conditions we can provide for a cool and comfortable sleep.



Headboards.

Wood, cotton, wool and leather. Just as with everything we do, nothing but the best of nature's own materials are welcome in our headboards. Because the headboard has such presence, it possesses the ability to instill a feeling of perfection – even in a bedroom with socks on the floor.



HÄSTENS DAVID

A simple and timeless design by Thomas Eriksson. Manufactured from wood, wool and cotton.

Available heights: 95 and 125 cm. Depth: 15 cm.

Fabric alternatives: Category A, B and C.



HÄSTENS HARMONI

A real classic, traditional with soft lines. Designed by Jack Ryde. Manufactured from wood, wool and cotton.

Available heights: 95 and 125 cm. Depth: 5 cm.

Fabric alternatives: Category A, B and C.



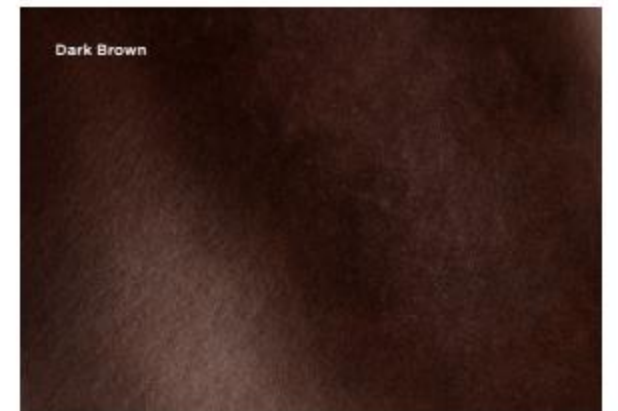
HÅSTENS ANNIVERSIA

Headboard designed by Mats Aldén. With exquisite details, patina and hand-sewn seams for a genuine vintage feel. Manufactured in certified organic Swedish leather.

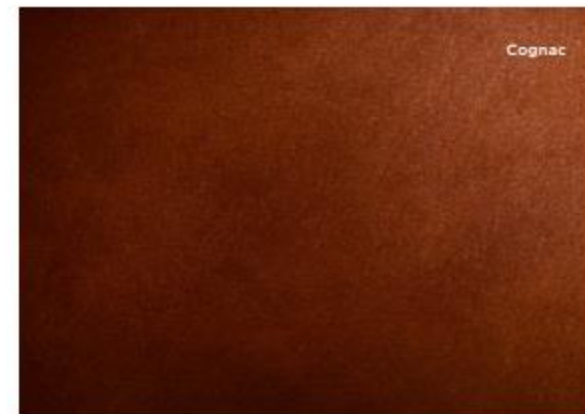
Available height: 134 cm. Depth: 10 cm.



Black



Dark Brown



Cognac

**HÄSTENS TAMERLAN**

Headboard designed by Yvonne Börjesson. Panama weave pattern in a modern and elegant design. Manufactured from wood, wool and cotton as well as Swedish leather.

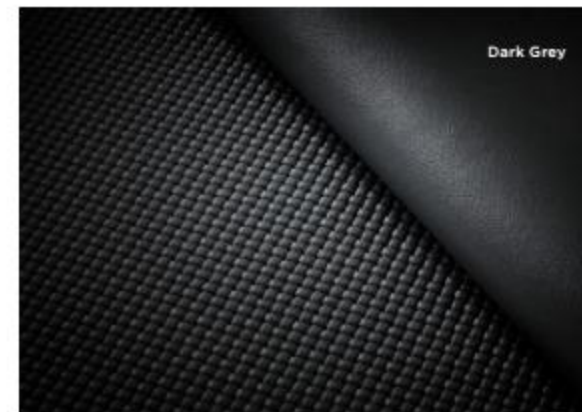
Available heights: 125 and 161 cm. Depth: 6 cm.



White



Beige



Dark Grey



Hästens Streiff Light Grey



HÄSTENS EBBE
A tribute to craftsmanship. Elegant with accentuated sewing details. Manufactured from wood, wool and cotton.
Available heights: 95 and 125 cm.
Depth: 7 cm.
Fabric alternatives: Category A, B and C.



HÄSTENS ATLAS
Sewn in a classically quilted furniture fabric with buttons. Manufactured from wood, wool and cotton.
Available heights: 95 and 125 cm.
Depth: 6 cm.
Fabric alternatives: Category A, B and C.



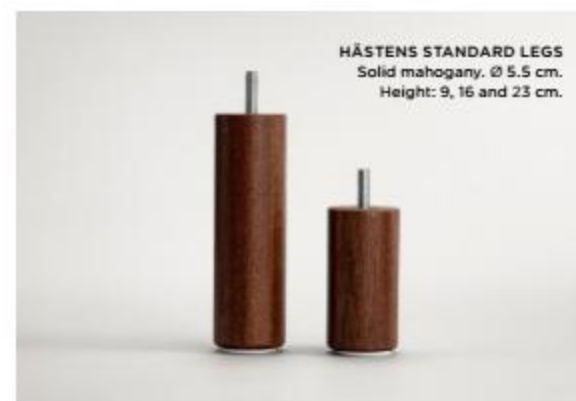
HÄSTENS STREIFF
Ultramodern design by Yvonne Börjesson. Manufactured from wood, wool and cotton as well as French calf leather.
Available heights: 125 and 161 cm.
Depth: 8 cm.



HÄSTENS L-LEGS
Provide extra stability. Suitable for all headboards except for Anniversia.
Adjustable heights: 9, 16, 23 and 30 cm.

Bed legs.

Slender and low in polished steel? Classic in solid mahogany? Or designed by a legendary architect? Whichever model of bed legs you choose, you get the same high-quality materials, finish and design that you get with our beds. And don't be afraid of our trumpet legs. We guarantee that the name only refers to the shape.



*Designed by Thomas Eriksson.



*Designed by Thomas Eriksson.



Bed skirts.

Why not let our unmistakable checks elegantly fall all the way down to the floor? Our bed skirts are available straight or pleated in a range of sizes, heights and colors that make it easy to find a favorite. Why not change bed skirts on occasion? After all, a little variation in the bedroom is never wrong.



HÄSTENS PLEATED BED SKIRT

Covers the mattress and base of the bed. 100% cotton.

Heights (including standard legs):

Marquis, Excel and Superia: 45 cm.

Maranga and Eala: 48 cm.

Herlewing: 52 cm.

2000T, Marwari and Appaloosa: 56 cm.

Vividus: 57 cm.

Available in color categories A and C.

HÄSTENS STRAIGHT BED SKIRT

Covers the mattress and base of the bed. 100% cotton.

Heights (including standard legs):

Marquis, Excel, Superia and Maranga: 38 cm.

Eala and Herlewing: 48 cm.

2000T, Marwari and Appaloosa: 52 cm.

Vividus: 55 cm.

Available in color categories A, B and C.

How often do
you wake up
the happiest
and most
patient version
of yourself?

Pillows and down quilts.

In colder climates, geese develop a more resilient and better down to keep from freezing. It is therefore no coincidence that the down we fill our pillows and quilts with comes from geese from Germany and Denmark. We are equally particular with the covers. They shouldn't be so sparse that the down escapes or so thick that you get hot and sweaty. The balance we seek in everything is present here as well.



When forced to choose the height of your pillow, lie low.

Hästens pillows show that our vision of improved sleep quality extends beyond our beds. Unique beds require unique pillows, of course.

Over the course of three years, we have developed a whole new series of pillows with other experts. Our aim was to set aside convention and rethink the pillow based on our combined expertise and your sleep needs.

Overstuffed pillows that are too high force you to angle your neck regardless of what your sleep position is. This also angles your trachea, which impairs your breathing. Furthermore, it can force your whole body into a poor posture.

Hästens' straightforward approach to pillows is the opposite.

We want your spine, neck, and trachea to be as straight as possible. This then opens up your breathing, which can help you relax, sleep better, and even snore less. The more comfortable the bed you sleep in is, the more your shoulders will sink into the mattress – and thus the thinner the pillow we recommend you to have. We have developed different pillows that are based on

each bed model's special comfort profile, from firm/stable to a more floating feeling. Naturally all are filled with a different mix of premium down and feathers. And since all our beds are extremely pliable, all our pillows are more or less flat.

The difference in comfort can be felt right away. The whole idea is that you sleep like a baby – and we mean that literally. Babies often sleep without a pillow; instead, they lie with their neck straight because their heads are larger in relation to their body size. An adult may, therefore, need a certain degree of support to be as relaxed.

Of course, we have given a lot of thought to the fabric we use on our pillows as well. It is woven to allow air to circulate in and out of the pillow so that your most important body part shall be kept cool and dry. And it's made of 100% cotton for the wonderful sensation on your skin.

Finally, a parting admonition: Unfortunately, it's not possible to achieve the full sensation of restfulness and wakefulness that Hästens is known for just by buying one of our pillows. For that, you will need the bed to go with it.



HÄSTENS PILLOW COLLECTION

HÄSTENS PILLOW 2000T
90% goose down, 10% goose feathers.

HÄSTENS PILLOW HERLEWING
90% duck down, 10% duck feathers.

HÄSTENS PILLOW EALA
80% duck down, 20% duck feathers.

HÄSTENS PILLOW MARANGA
50% duck down, 50% duck feathers.

HÄSTENS PILLOW SUPERIA
70% duck down, 30% duck feathers.

HÄSTENS PILLOW EXCEL
30% duck down, 70% duck feathers.

HÄSTENS PILLOW MARQUIS
15% duck down, 85% duck feathers.

HÄSTENS ECO-SOFT STANDARD PILLOW (LOW)
HÄSTENS ECO-SOFT DELUXE PILLOW (HIGH)
90% goose down, 10% goose feathers.

HÄSTENS ECO-MEDIUM STANDARD PILLOW (LOW)
HÄSTENS ECO-MEDIUM DELUXE PILLOW (HIGH)
70% goose down, 30% goose feathers.

HÄSTENS ECO-FIRM STANDARD PILLOW (LOW)
HÄSTENS ECO-FIRM STANDARD PILLOW (HIGH)
50% goose down, 50% goose feathers.

Size: 40x80 cm, 50x60 cm, 50x75 cm, 50x90 cm, and 60x80 cm.



HÄSTENS DOWN QUILTS

Keep yourself cool in the summer and warm in the winter. Hästens down quilts are available in different weights for all seasons, but they are all breathable, soft, and almost impossible to resist.

HÄSTENS ECO-LIGHT DELUXE DOWN QUILT
90% goose down, 10% goose feathers.

HÄSTENS ECO-MEDIUM DELUXE DOWN QUILT
90% goose down, 10% goose feathers.

HÄSTENS ECO-WARM DELUXE DOWN QUILT
90% goose down, 10% goose feathers.

Size: 135x200 cm, 155x220 cm, 240x220 cm, 240x230 cm, 240x275 cm and 260x220 cm.



HÄSTENS TRAVEL PILLOW

Bring a small piece of Hästens with you wherever you go. Filled with down, our travel pillow is a fresh, healthy and comfortable travel companion that ensures you'll arrive rested and alert.

Size: 39x29/58 cm. 30% duck down, 70% duck feathers. Color: Blue Check.

Our therapeutic pillow is ready for any pillow fight.

It's not just your pillow that needs to breathe well when you sleep. It's even more important that you do, of course. Therefore, together with a chiropractor, we have developed a pillow – tested worldwide – to help you breathe better while you sleep.

Hästens therapeutic pillow has just the right amount of softness and contains two pressure relief cylinders – one of which can be removed to reduce pressure and provide support for your neck so that it ends up at the right angle. The goal is that you won't even notice that you're lying on it.

The filling consists of down and feathers. The down insulates and maintains your body heat while simultaneously allowing the moisture your body gives off to pass through. The fabric is 100% cotton and woven to prevent the down and feathers from escaping but, at the same time, allowing air to pass through so that the filling can breathe.

15% duck down, 85% duck feathers.

Size: 50x60 cm.

Buoyancy: 400 cu in.





Bed linen.

Many people associate thick and heavy sheets with quality, but truth be told, these sheets are not necessarily good for sleeping in since the high thread density can trap moisture. We take a different approach, finding threads that are as thin and fine as possible to allow our sheets to breathe – something sheets do if they are sufficiently thin, supple and lightweight. And the fact that 10,000 meters of thread are used for just one square meter of our sheet fabric might say something about the lengths we'll go for your comfort.

HÄSTENS SATIN PURE

Hästens' premium range of super light bed linen made from cotton provides a luxurious touch to the bedroom with its soft silk gloss and beautiful, monochrome shades. Hästens Satin Pure is woven with a thread density of 300/110 g/m² with extra-long cotton fiber, and is made to feel completely weightless against your skin. The collection meets the highest Oeko-Tex 100 standard.

Available as pillow cases, down quilt covers, bed sheets and fitted sheets.

100% combed cotton satin.



Dusty Mauve



Misty Rose



Princess Green



Silver Grey



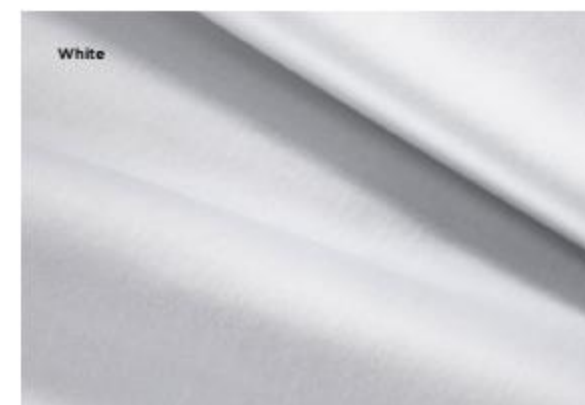
Sand



Beige



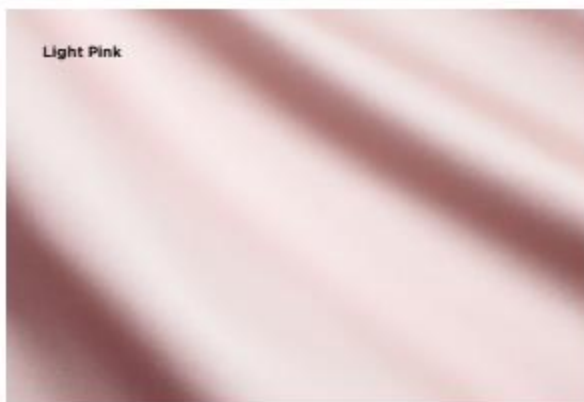
Grey



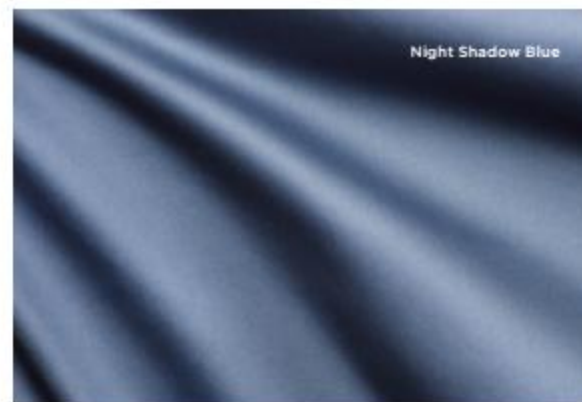
White



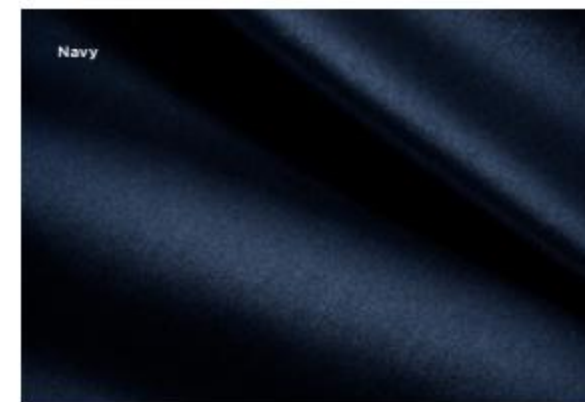
Pink Beige



Light Pink



Night Shadow Blue



Navy

HÄSTENS BY BERNADOTTE & KYLBERG

This bedding, designed to elevate and enhance the graphic identity of the Marwari bed, was created in 2017 by the award-winning design duo named above. The bedding for Marwari is available in warm colors to match the dark brown color of the bed's fabric.

Available as pillow cases, down quilt covers, bed sheets and fitted sheets.

100% combed cotton satin.

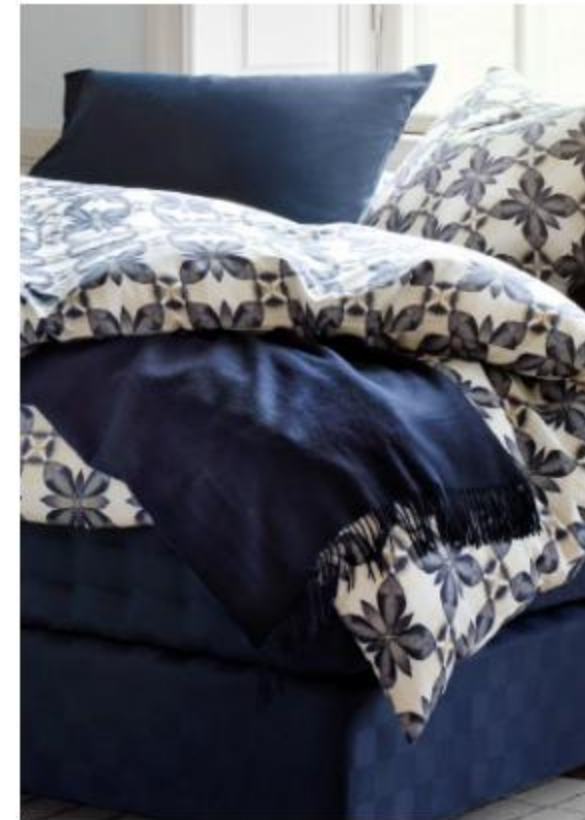


HÄSTENS HERBARIUM

A revitalizing sleep experience, designed by Gunilla Lagerhem Ullberg. Nature served as the inspiration for Hästens Herbarium – a kaleidoscope of clematises and hollyhocks in a checkered pattern. The collection is made of our finest 100% combed cotton in light satin with a thread density of 300/110 g/m². The fabric is much lighter than traditional or heavier cotton fabric, which provides a silky surface that feels softer against the skin.

Available as pillow cases and down quilt covers.

100% combed cotton satin.



Petal



Tangerine



Hickory



Blue



Beige

HÄSTENS ARCHIPELAGO

A truly first-class collection with bed linen in our finest 100% fil-à-fil cotton, woven with two different colored cabled threads for a distinctive deep tone and unique, crisp feel. The bed linen is woven and sewn in Switzerland using extra-long-fiber cotton, resulting in an incredibly soft and weightless feel. Archipelago's design, inspired by the white sand dunes and sun-bleached colors of the Nordic islands, gives a fresh touch to all bedrooms.

Available as pillow cases and down quilt covers.

100% fil-à-fil cotton.



Breeze



Tide



Baltic

HÄSTENS ORIGINAL CHECK

Hästens Original bed linen is perfectly coordinated with our classic checkered beds and sets the tone for every bedroom. The bed linen is woven in 100% combed cotton percale with a thread density of 300/124 g/m² to provide you with a wonderful sleep, wrapped in our famous checks.

Available as pillow cases and down quilt covers.

100% combed cotton percale.

On one side of Double Check, the checks are 10x10 cm, and on the other side they are 5x5 cm.



Blue Check



Harvest Check



Double Check



Silver Grey Check

HÄSTENS PURE WHITE

Scandinavian simplicity at its best: Hästens Pure White bed linen is the perfect complement to your Hästens bed. It is manufactured in our finest percale of 100% combed cotton with a thread density of 300/120 g/m² with the aim of giving you as sweet dreams and deep sleep as possible, while retaining its beautiful appearance wash after wash. It's a bed linen set for every home in pure and fresh white.

Available as pillow cases, down quilt covers, bed sheets and fitted sheets.

100% combed cotton percale.



HÄSTENS VELVET

Pillow case and down quilt cover in a modern yet timeless chambray fabric. Our special modal and linen mix has a special softness that you recognize from Hästens' products with the rustic feel that makes the linen so comfortable to sleep in.

Available as pillow cases and down quilt covers.

70% modal and 30% linen.



HÅSTENS HÅSTAR

Made in 100% long-fiber Egyptian cotton with a jacquard weave pattern for a completely natural sleep environment. Available in two colors with a finely woven tone-in-tone horse pattern in satin.

Available as pillow cases and down quilt covers.

100% combed cotton jacquard.



Blue/Grey



White

HÅSTENS SATIN CHECK

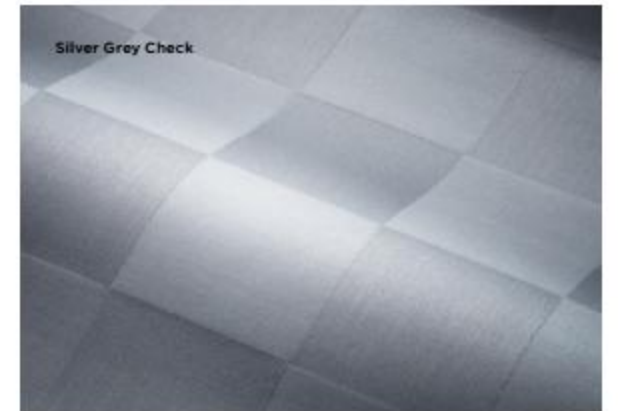
Pillow cases and down quilt covers in four colors made to match or contrast with our bed bolster colors. Each part can be combined with the existing Satin Check collection.

Available as pillow cases and down quilt covers.

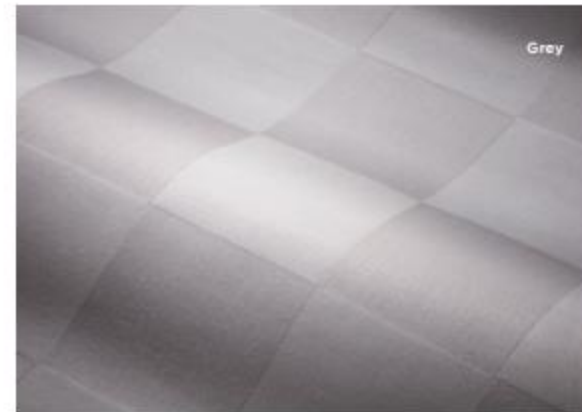
100% combed cotton satin.



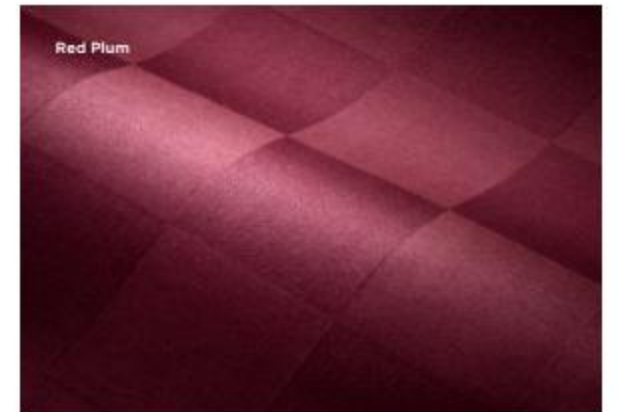
White



Silver Grey Check



Grey



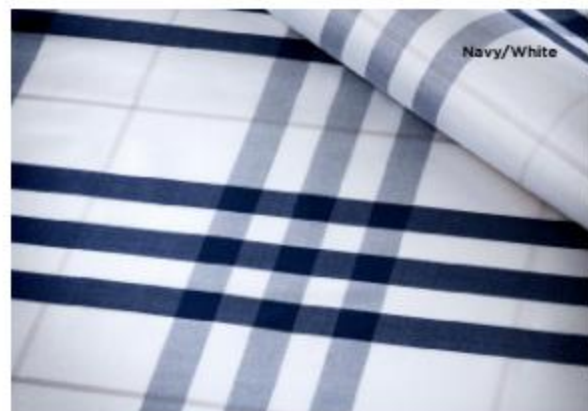
Red Plum

HÄSTENS MODERN CHECK

A light, modern cotton twill weave with interlaced lines that form a mod-inspired check pattern. Modern Check is made with mercerized cotton, which is stronger and much shinier than customary cotton. The twill weave provides a draping effect.

Available as pillow cases and down quilt covers.

100% combed cotton twill.



Navy/White



Grey/White

HÄSTENS PAISLEY AND PREMIUM SATIN

Classics in a new Hästens' format. Pillow cases, down quilt covers and fitted sheets in a light jacquard weave satin made out of Egyptian cotton. At a distance, Hästens Paisley looks like a monochrome block pattern, but upon closer inspection the classic motif can be seen.

Pillow cases and down quilt covers are available in Paisley White and Paisley Dark Grey.

Fitted sheets are available in Satin White and Satin Dark Grey and do not have the paisley pattern, however its color matches perfectly.

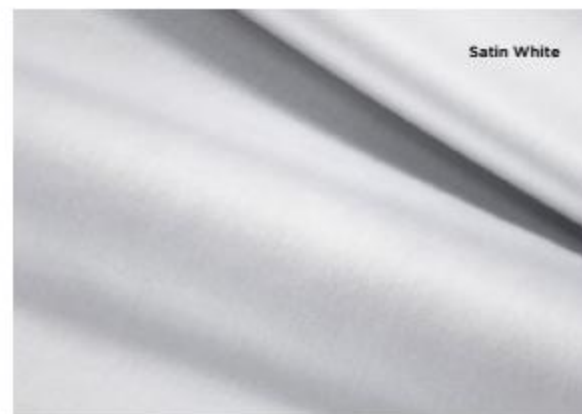
100% Egyptian cotton satin.



Paisley White



Paisley Dark Grey



Satin White



Satin Dark Grey

**You are how
you sleep.**

PERSONAL ACCESSORIES

HÄSTENS BABY ALPACA TROWS

Enjoy soft and super light 100% baby alpaca throws, handmade in Peru. This is one of our favorite accessories for cool fall nights and chilly winter days.

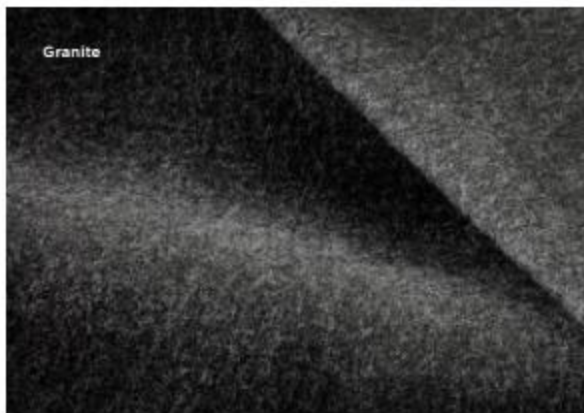
The alpacas are around two-and-a-half years old when they are sheared for the first time. The wool from the first shearing is called baby alpaca wool and is known for being finer than the wool from adult alpacas. Alpaca wool is naturally hypo-allergenic, as it is the only wool fiber that does not contain lanolin, the main cause of wool allergies. It also has softer fibers than sheep's wool, which reduces the likelihood of itching.

The throw is available in three colors: Navy/Cream Check, Granite, and Cream. Cream and Granite are the alpaca's natural colors, Navy is dyed.

Size: 130x200 cm.



Navy/Cream Check



Granite



Cream



HÄSTENS BLUE-CHECK PAJAMAS

Soft cotton pajamas with a breast pocket.

Sizes: XS, S, M, L and XL.

Made in 100% cotton satin weave with our classic blue-check pattern.



HÄSTENS BATHROBE

Luxurious thick bathrobe in terry cloth.

Sizes: S, M, L and XL.

Made in 100% cotton with our classic blue-check pattern.



HÄSTENS DOWN BOOTS

Down boots designed in our luxurious 100% cotton satin weave with classic Hästens' details, filled with 80% goose down and 20% goose feathers. Cozy and breathable for when you want to indulge yourself.

Color: White and Navy.





Children's collection.

FOR THE LITTLE ONES

Give your children a deep night's sleep. Hästens' children's collection and children's mattresses are developed with the ambition to take as good care of your little darlings as possible.

CHILDREN'S BED LINEN

You love them more than anything in the world. And if they sleep well, chances are that you will too. Hästens' bed linen for children is manufactured from the same natural fabrics and textiles as our main collection in order to give the little ones a better start in life.



HÄSTENS ORIGINAL CHECK

Hästens Original Check bed linen is perfectly coordinated with our classic checkered beds and sets the tone for every bedroom. The bed linen is woven in 100% combed cotton percale with a thread density of 300/124 g/m² for unbeatable softness.

Available in Blue Check, Silver Grey Check, and Harvest Check as pillow cases, down quilt covers, and bed sheets.



HÄSTENS HÄSTAR

Give your little ones a healthy start in life with wonderfully soft and light bed linen of our highest quality that is gentle on sensitive skin. Made in 100% long-fiber cotton with a jacquard weave pattern. Available in two colors with a finely woven tone-in-tone horse pattern in satin.

Available in Blue/Grey and White as pillow cases and down quilt covers.



HÄSTENS SATIN PURE

Hästens' premium range of super light bed linen made from cotton provides a luxurious touch with its soft silk gloss and its beautiful, monochrome shades. Hästens Satin Pure is woven with a thread density of 300/110 g/m² in extra-long combed cotton fiber, and is made to feel completely weightless against your skin. The collection meets the highest Oeko-Tex 100 standard.

Available in Navy, Grey, White, Silver Grey, Beige, Sand, Light Pink, Misty Rose, Night Shadow Blue, Princess Green, Pink Beige, and Dusty Mauve as pillow cases, down quilt covers, and bed sheets.



HÄSTENS PURE WHITE

Scandinavian simplicity at its best: Hästens Pure White bed linen is the perfect complement to your Hästens bed. It is manufactured in our finest percale of 100% combed cotton with a thread density of 300/120 g/m² to give your little ones as sweet dreams and deep sleep as possible. It's a bed linen set for every home in pure and fresh white.

Available in Pure White as pillow cases, down quilt covers, and bed sheets.



HÄSTENS PILLOW FOR BABY CARRIAGES
90% goose down, 10% goose feathers.
25x35 cm.



HÄSTENS DOWN QUILT FOR BABY CARRIAGES
90% goose down, 10% goose feathers.
55x70 cm.



HÄSTENS PILLOW FOR CHILDREN'S BEDS
90% goose down, 10% goose feathers.
35x55 cm.



HÄSTENS DOWN QUILT FOR CHILDREN'S BEDS
90% goose down, 10% goose feathers.
100x130 cm.



HÄSTENS BV TOP MATTRESS
Filled with thick, soft cotton and wool with springy support and ventilation that controls body temperature. Suitable for children with extra sensitive skin. The top mattress can be used separately, on top of a thick mattress, in a crib or cradle. Fits a wide range of children's beds.



HÄSTENS BLUE-CHECK PAJAMAS
Children's pajamas in Hästens' classic blue check. Manufactured in wonderfully soft cotton satin.

After all talk about straightening out your body, let's get a few more things straight.

WHY DO WE MAKE BEDS MADE FROM NATURAL MATERIALS?

Natural materials have outstanding qualities when it comes to comfort and durability. A bed made out of materials like horsetail hair, wool, cotton and flax has natural air circulation built in. Air can circulate around your body and moisture is wicked away, which helps you sleep in a cool, dry and comfortable way.

WHY ARE OUR BEDS FREE FROM LATEX AND FOAM RUBBER?

In our opinion, natural materials such as horsetail hair, wool, cotton and flax are a lot more pleasant to have next to your skin than man-made materials such as latex, polyurethane and foam rubber. In addition, the materials that we use are free from chemicals.

WHAT DO WE MEAN BY SUSTAINABILITY?

A truly sustainable bed is friendly to the environment throughout its entire life cycle. It takes a very long time to wear out and can therefore be used for many, many years. It's good to replace the top mattress after approximately six to seven years, but the actual bed is built to maintain its quality for at least 25 years.

CAN OUR BEDS BE RECYCLED IN A SAFE WAY?

Yes, of course. All materials in your Hästens bed, such as the horsetail hair, wool, cotton, flax, wood and steel springs, can be recycled. They are all naturally degradable or can be returned to nature in a safe and secure way. Also, the materials used for the packaging are recyclable and naturally degradable.

OUR FABRIC CARRY THE OEKO-TEX 100 LABEL, PRODUCT CLASS 1. WHAT DOES IT MEAN?

That means "baby class", one of the toughest health requirements that exist in the furniture industry. Products labeled with Oeko-Tex 100 Standard must meet strict requirements and not be regarded as dangerous for people who come in contact with them, including children. The standard requires that manufacturers allow their products to be rigorously tested in laboratories to ensure that they are free of harmful, chemical substances. The tests are conducted by independent institutes.

HOW COME OUR BEDS DON'T HAVE ZONAL SUPPORT?

A zonal support system provides different levels of firmness at different zones in the same bed. The zones close to protruding parts of the body are softer, which is said to facilitate blood circulation. A nice thought, but there may be a backside.

Hästens built and tested beds with zonal support systems a few years ago. The results: However much we tried, we still could not place the zones in such a way that the body always remains in the most ideal and comfortable position. You move around quite a bit during a night's sleep, changing position several times a night. During our tests, it turned out that a bed with zonal support isn't optimal for those who sleep diagonally or on their stomach. It may feel uncomfortable that the stomach rests on a firm area that is intended to give support to your back.

Hästens would like you to be comfortable no matter how you lie in your bed. That is why we build beds using pliable materials which are naturally soft. This combination, along with the latest technique within spring technology, will give your entire body support and pressure relief.

CAN YOU SLEEP IN OUR BEDS IF YOU ARE ALLERGIC TO HORSES?

Yes. The horsetail hair that we use for upholstering our mattresses is boiled and carefully washed in environmentally friendly soap. Then washed again so that it's completely clean. After that we sterilize it as well. The horsetail hair is cycled through an autoclave oven (the same type which dentists use to sterilize their instruments), which means that it is being heated to 140°C. The Karolinska Institute in Stockholm has carried out tests and confirmed that our horsetail hair is completely free from allergens after this treatment.

WHAT HAPPENS IF YOU ACCIDENTALLY SPILL A GLASS OF WATER IN YOUR BED?

It gets wet. But then the natural materials in the bed go to work. The fantastic cotton in the top mattress absorbs the water and distributes it across the surface, facilitating evaporation. The horsetail hair, wool and flax that are wrapped in airy layers are outstanding when it comes to wicking the moisture away. It may take a little while, but then your Hästens is as dry as if it had never happened.

Do, however, be more careful with other beverages that contain sugar, for instance, because they too are absorbed but not as easily dissipated by the top mattress.

280-301

OUR FAMILY HERITAGE

AND HOW WE PAY IT FORWARD

This is our first mattress.



Even then we were trying to help our customers feel rested when they got up.

You may have noticed the horse featured prominently in the Hästens logo. That's not only a tribute to the horsetail hair used in our beds, but also a nod to our origins as saddle makers in 1852. At the time, master saddlers doubled as upholsterers, applying their craft to make highly sought cushions and mattresses from horsetail hair.

It was around this same time that Europe's second industrial revolution had taken Sweden by storm. A zeal for mass production changed many business owners' focus from pride in craftsmanship to pride in volume, even among saddlers. But master craftsman Pehr Adolf Janson wasn't ready to cede his life's passion to a sewing machine. He chose a different path.

His small factory near the village of Köping served the demanding requirements of local farm owners who were loyal to him. It is almost impossible for people today to understand just how demanding these customers were or the importance that they placed on their saddler. That could only be appreciated fully by someone who has made the 150-kilometer trek from Köping to the Swedish capital Stockholm on horseback.

Pehr Adolf and his craftsmen became known for hand-stitched, sprung saddles and coachman's cushions filled with high-quality horsetail hair that were hardwearing and comfortable. He maintained a brisk business even without automation, until progress stepped in again.

At the dawn of the 20th century, the automobile had begun to eliminate the need for both horses and saddlers. It was only natural that Hästens' craftsmen, now under the direction of Pehr Adolf's son Per Thure, would apply their expertise with stitching, springs, and horsetail hair to develop the company's bed business.

Pehr Adolf wanted his mattresses to be every bit as good as his saddles. So, he set out to learn how the very best beds were being built. Nothing was left to chance. After all, he wasn't just crafting his first bed, he was also crafting his family's future.

At the time, European connoisseurs in the art of sleeping turned to purveyors in France and England for their beds. Pehr Adolf was inspired by those who built beds for opera stars and royalty on the continent. He studied the craft and gathered knowledge, determined to give the sources of his inspiration a match for the champion title. The bed that wanted to be the best in the world would be manufactured from this day in a small town that is practically unknown to anyone living outside Köping.

French and English beds were considered to be the finest in Europe. But Pehr Adolf's purpose was not to copy their work, but to give them a run for their money by improving upon it. That he did.

The idea behind the first Hästens bed was simple: to produce a bed that is in complete harmony with the sleeper. No tricks, no shortcuts – just honest, natural materials such as wool, cotton, flax, horsetail hair and durable northern Swedish pine, assembled by hand.

The idea for the second Hästens bed was simpler still: not to be satisfied with the first bed. Nothing is so good that it can't be improved, if only by one small detail.

That mentality has guided the development of every bed we've created since. Using a combination of design, craftsmanship and materials, each version of the Hästens bed is better than the one that preceded it – if only by one small detail.

Without horses there would be no Hästens.

When you consider the contribution horses have made to civilization you may picture statuesque emperors on horseback or covered wagons traversing vast plains. But the noble steed has been serving more domestic needs for over a thousand years – with its hair. Once used in everything from wallpaper and wigs to women's lingerie, horsetail hair was most coveted by upholsterers to whom it was as valuable as spun gold.

Horsetail hair has been the red (actually almost black) thread running through Hästens' long history. We have relied on this amazing natural material from our first days as saddle-makers in Köping. The horsetail hair is our ally in striving to provide you with more restful nights and wakeful days. There are several reasons for this.

First, each horsetail hair in a Hästens bed is naturally converted into an amazingly resilient curled strand that works as a tiny spring. Together, hundreds of thousands of these soft springs cushion your body, complementing the work of our internal spring systems.

Horsetail hair is an organic material, just like your skin, which means it can breathe and helps to transport moisture away. This is important

because as you sleep, your body will give off anywhere from 0.5 to 1.5 liters of water. Our horsetail hair can absorb 30% of its own weight and still feel completely dry to the touch. That keeps you cool

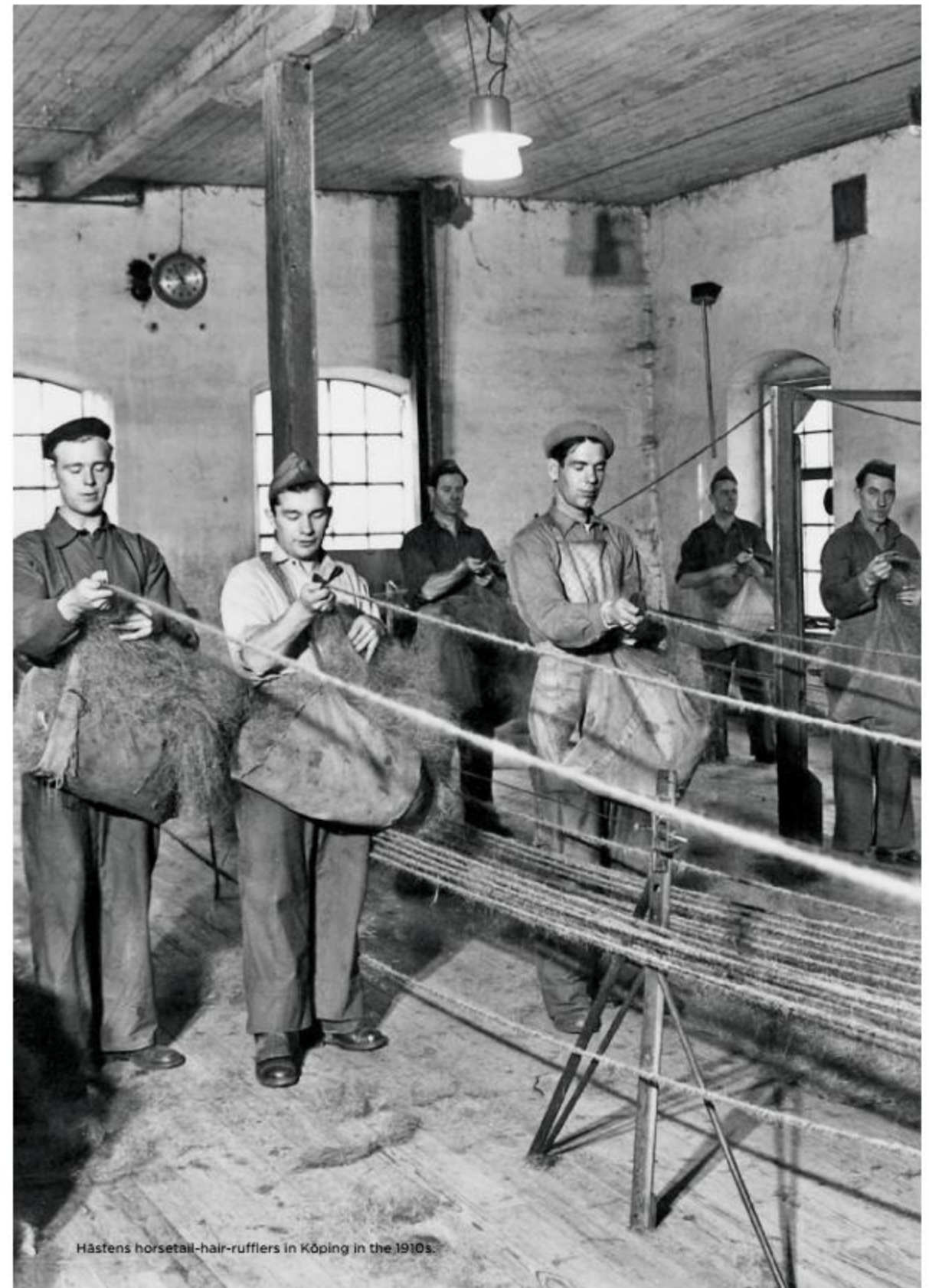
and composed under the covers. It's a minor miracle that happens every night.

Beds that use oil-based synthetic materials in their design or bed linen can block ventilation. Without the proper ventilation, these beds trap heat so that the temperature rises under the blanket. It can increase the time it takes to fall asleep and lead to restless sleep at night. You might lose important time for recovery and face the next day drained and

with decreased productivity.

We use our specific arrangement of natural materials such as horsetail hair, cotton, wool and flax because they can breathe – but also because they all belong to nature's family and can cooperate as a unit. Together, they secure your sleep quality by creating a comfortable sleeping environment.

Finally, horsetail hair is a natural, renewable resource. Therefore it's putting less strain on the environment. That, in itself, should help you sleep a little better at night.



Hästens horsetail-hair-rufflers in Köping in the 1910s.



On this mattress rests a worldwide company.

What you see to the left is our first born: Hästens very first mattress. It existed in the 1850s. And it's still manufactured today.

As you can imagine, this mattress has a special place in our hearts. Exactly the same craftsmanship performed by our colleagues almost two hundred years ago is still performed daily. Ideal for anyone who wants to sleep on a lovely, firm and airy horsetail hair mattress backed by 166 years of bedmaking know-how.

Its name may seem insignificant, TM8. (TM stands for "tagelmadrass", which is Swedish for horsetail hair mattress, and the number stands for the height in centimeters.)

But if you can appreciate a top mattress that is hand-filled, sewn and tassel-tied by our experienced bed masters, then you'll agree TM8 is the crown of our work. It lies on top, closest to you. Horsetail hair of our very best quality is embedded in the middle of the mattress, creating an airy layer of millions of springy horsetail hair spirals. Each breathes and transports humidity away as only high-quality horsetail hair can. Above and beneath the horsetail hair, a thin layer of clean, bright cotton is placed. This outermost cotton fabric provides a comforting embrace.

If you sleep on a TM8, then you rest on a piece of history.

Do you think the TM8 looks a little too fluffy? No worries, you can get our firstborn horsetail hair mattress as TM4, that is, four centimeters high. We believe in offering our customers choices and have done so since we started in 1852.

Back to square one.

Close your eyes and think of Hästens. You see a blue-check pattern, don't you? It wasn't always this way though. This iconic pattern arrived on the scene 126 years after the company was founded. And the reasons why may surprise you.

After four generations of nonstop sleep innovation, our founder's granddaughter married Jack Ryde, who joined the family business as CEO. Jack wanted to continue the tradition of improving on the Hästens legacy with innovations that would take the bed into the future. To answer this challenge Jack returned to Hästens' founding belief that there was always room for improvement, if only in the details. After looking deep inside himself and the bed, he arrived at the humble quadrangle that has become Hästens' standard bearer.

The year is 1978. There is unrest in the world, riots in Africa and the Vietnam war is just over. Humanity needs a good night's sleep now more than it has in years. Jack had the soul of an artist. As he saw it, a Hästens bed shouldn't be a silent fixture in a darkened room. He felt a Hästens bed should play a less apologetic role in the home. He wanted to give the bed a bold voice and to do that he turned to the language of design. The dark times of 1978 had a color palette of brown and orange longing for freshness, so Jack drew inspiration from blue skies and white clouds arranged in a neat grid that has become an inseparable part of Hästens' identity.

Blue and white. That was the signal for a new time. The old was cleaned out – onto the stage

came a feeling of freshness, freedom and a timeless, commercial form that distinguished Hästens from its competitors.

And so it was with the four corners of the square.

A numerologist would tell you that the square, represented by the number four, relates to the four seasons, the four points of the compass, the four elements, and therefore has a particularly close association with the Earth. Even more telling, it's the number most associated with building a secure foundation for the future. The square has its opposite in sight at all times. Therefore, fours often see things from a different viewpoint than others and are able to think both in an innovative and unconventional way.

Making the bed bolder on the outside was only half of Jack's idea. Making it better on the inside was the other half. That's because the real beauty of Jack's blue grid is best known to the men and women who build each Hästens bed by hand with fanatic precision. You see, Hästens' famous check pattern also serves as a work template for our craftsmen.

Its precise right angles and straight lines create a topography across the structure, providing familiar landmarks to guide the master craftsman's needle and hammer. This blue-and-white grid system ensures consistent handcrafting, bed after bed. A perfect example of form and function working in harmony.



Welcome to the Silicon Valley of bed builders.

Any visitor to Köping might wonder how such a disproportionate number of master craftsmen came to populate this small town in central Sweden. Natural selection, of course.

Crafting beds has long been a valued profession in Köping. Parents are proud to pass it on to their children, with each generation making its contribution to the craft. Outside our town, this type of generational knowledge has become a scarce commodity. But here, we work with what we have. And in Köping, we make beds.

Nature never admits to perfection, it just relentlessly refines through the process of evolution, one generation to the next. It's the same for Hästens: Good enough is never good enough. Our town provides an environment where the single-minded pursuit of perfection, persistently executed step by step, refining itself over the course of centuries, lives on.

At Hästens we have craftsmen who have been with us for generations. In fact, that's how it's been since we started building mattresses seven years before Charles Darwin wrote his treatise on evolution in 1859. That continuity, quite literally, has kept us at the forefront of change.

Over the years, our small community has grown into a unique knowledge center in the art and craft of inducing wakefulness. In the same way that residents of Silicon Valley live and breathe ones and zeros, our locals talk mattresses and frames, enhancing each other's craft with the constant exchange of thoughts and ideas.

As you might guess, we have no plans to move. Our birthplace is Köping. And here our beds and craftsmen will continue their evolution.



His Majesty, the King of Sweden Gustav VI Adolf, appointed Hästens as the official supplier to the royal court. Here seen on a visit to the factory in Köping 1953.



“BEFORE EDISON
INVENTED THE
LIGHT BULB,
BEFORE BELL
MADE HIS FIRST
TELEPHONE CALL,
AND BEFORE FORD
PUT THE WORLD
ON WHEELS, MY
GREAT-GREAT-
GRANDFATHER
FOUNDED
HÄSTENS.”

JAN RYDE, OWNER AND CEO

Necessity is the mother of invention. In the very north of Sweden, above the Arctic Circle, the sun sets at 11:38 a.m. on November 30 and does not peep over the horizon again until January 11. That one night lasts forty-three days. But even as far south as Stockholm, winter nights can span up to 18 hours.

In a country like ours, you develop a very special relationship with your bed.

All these days in the dark also provide abundant time to ponder how your life might be made better. Perhaps this is why Sweden has produced so many famous inventions like dynamite, the refrigerator, and the zipper.

For 166 years Hästens has been striving to provide Swedes with the energy to make great dreams happen. With several worldwide patents to its credit, Hästens is proud to join the ranks of prolific inventors. Today our beds are sold in 37 countries – promoting wakefulness.

Just imagine what you could dream up on a Hästens bed.

The architect Ralph Erskine designed our first purpose-built factory, which was completed in 1950. Please stop by when you pass by Nya Hamnvägen 7.





"I WANT YOU TO BE
BETTER THAN I AM.

I WANT YOU TO
LEARN AND MASTER
A PROFESSION
WHERE YOU CAN
GIVE PEOPLE WHAT
THEY NEED.

AND IN SO DOING,
SUPPORT THOSE
YOU LOVE."

JOHAN JANSON,
FATHER TO PEHR ADOLF JANSON,
HÄSTENS' FOUNDER

These inspired words, passed from father to son at the beginning of the 19th century, were taken to heart by Pehr Adolf Janson. He would grow up to follow his father's advice, become a master craftsman and Hästens' founder.

As Pehr Adolf would soon learn, guiding a family business from one generation to the next can be a rough ride even in the best of times. But how do you take craftsmanship into an age of artificial intelligence, virtual worlds, and industrial robots? The words that inspired our founder have been

the key. Never being satisfied. Attending to details. Embracing progress without forgetting our heritage. These lessons taught over five generations have guided our company to where it is today.

The importance of craftsmanship to our family can't be overstated. Mastery ensures the relevance of our product. It also provides the confidence to try new things, although we still maintain that running your thumb over planed pinewood can tell you more than the best laser scanner.

Pehr Adolf imprinted these lessons on his three

children. One of whom, Per Thure, took over the family business in 1885, and his other son Pehr Adolf Jr. trained as a master craftsman.

Pehr Adolf Jr. also developed strong convictions about giving people what they needed that went beyond the family business. He became an innovative politician, who at the end of the 19th century fought for equal rights between men and women.

If Hästens beds are the platform for a better tomorrow, Pehr Adolf Jr.'s struggle for equal rights

was a platform for today's egalitarian Sweden and the standard of living it provides our country. Pehr Adolf Jr.'s work, in part, paved the way for his brother's granddaughter Solveig to assume leadership of Hästens in the 1960s. This was a very controversial role for a woman at that time.

There you have the path chartered by Hästens over the centuries.

As we say in Sweden, "We know from where we come. But we never walk in old footsteps."

The year the world woke up on the right side.

It's 1988, and the winds of change are afoot. Nelson Mandela is being cheered in Wembley Stadium, England, Gorbachev is pushing to reinvent Eastern Europe, Sweden is welcoming the Dalai Lama, and at home, here in Köping, the fifth generation is taking over at Hästens.

Jan Ryde is the new link in the chain.

The great-great-grandchild of our founder took over the family business, together with his wife Anne-Lie, in a world that had finally abandoned the short-term thinking of previous decades. By this time, the orange shag carpets and plastic fixtures of the Seventies were beginning to make their exit. It was a new world that was rediscovering the beauty of genuine craftsmanship and new possibilities for nature's ancient materials. The polymers were out and wool, cotton, flax, horsetail hair and wood were moving back into our homes.

We see 1988 as the year the world woke up on the right side and began making better decisions.

Jan was quick to pick up on the currents of the time. He saw the world around him unifying and wanted Hästens to be part of it. At that point, his beds were well respected in Sweden. But would a bed from Köping be equally well received in Shanghai or Chicago? Was the world ready for Hästens beds?

Jan took the leap.

The results were immediate. The first challenge in transitioning to a global producer was figuring

out how to increase production volume without compromising on quality. So Jan and Anne-Lie spent time on the factory floor working with their manufacturing, storage and delivery teams. This process would be repeated as the Hästens factory went through a series of expansions to meet the increased demand from many new countries.

The handmade bed that set out to be the best in the world, now wanted to make its dream a reality. Word of mouth spread as orders arrived from around the globe. Our first international customers included everyone from rock stars to registered nurses, professional athletes to chartered accountants, ballerinas to bakers – in fact, anyone who understood the value of wakefulness invested in our beds to face each day as the best versions of themselves.

In 1995, we received further evidence that Hästens was maintaining exceptional quality. We were appointed by His Majesty King Carl XVI Gustaf as the purveyor of beds to the royal court. Being sticklers for detail, we should mention that this was actually the second time we had received this honor from the court. Each monarch appoints their purveyor of sleep. King Carl XVI Gustaf's predecessor on the throne made the same choice.

These days, we prefer to think of ourselves as purveyors of sleep – for everyone who appreciates the value of more wakeful days.



Jan Ryde,
owner and CEO.



Proud owners of a dream.

You could say we've had the good fortune to be the owners of a rare bed factory for five generations. And you'd be right. But what, actually, is ownership? You build upon the toil and dreams of your ancestors and feel proud if your own children do the same.

The need for a good night's sleep shall last for many, many generations. Therefore, we patiently refine what we have. There's a connection to the farmer's industriousness as he turns a few more square meters of stony ground to arable land – year after year. To make his field grow, slowly but decisively.

Take our bed 2000T for example. It's built to be the bed of the future. To be the bed of the future forever it has to be constantly rebuilt, so it will

become even better and not get stuck in the past.

But still, it's a 2000T.

You may have dreams as a private person and as a businessperson (especially if you are a bed manufacturer). Ours is for everyone on Earth to sleep on a Hästens bed. That's a dream we hope to impart on the next generation of bed builders from Köping as they prepare themselves to take sleep and awakening to a whole new level.

We are convinced this would make the world a better place. More alert, happier, more open, friendlier, more harmonious, and more satisfied. That's the kind of effect a good night's sleep can have on your days.

Achieving that dream would really make us genuinely proud.

Did you know that even artificial intelligence needs to rest? Experts have discovered that an AI-system that sleeps (i.e. is shut off from its surroundings) and dreams (i.e. replays experiences) learns more and performs better over time.

Hästens from the cradle to today.



PEHR ADOLF JANSON

On March 22, 1852, Pehr Adolf Janson, the first generation in the family business, becomes a certified master saddler. At that time, the master saddler test required making a horsetail hair bed mattress.

1852



Per Thure's son, David Janson, realizes that the heyday of saddle-making is over. With the intention of becoming a master of beds, he and his father refocus the business on the manufacture of bed mattresses. David thus becomes the third generation of family bedmakers. But a little horse designed by David's cousin Paul is still permitted to stand as a symbol next to the company's name.

1917



Hästens' new factory, designed by architect Ralph Erskine in 1948, is completed.

1950



Jack Ryde designs what has become Hästens' iconic blue-check design.

1978



King Carl XIV Gustaf is the second monarch in a row that designates Hästens as a royal court supplier.

1995

The factory's extension is finished. This was also designed by architect Erskine.

1998

Hästens receives the Signum Award for having succeeded in making the word mark Hästens and the blue check into two aspects of the same brand, and yet being strong on their own.

2013



Marwari and Appaloosa, designed in collaboration with Bernadotte & Kylberg, are launched.

2017

Late 1800s

The family moves to Hed, right outside Köping and Pehr Adolf's sons, Per Thure and Adolf Fredrik Janson, become saddlers and, thus, second generation bedmakers.

1924

The small village of Hed is getting too small for the expanding family business. Together with his wife Astrid, David moves 24 kilometers to nearby Köping to establish a new factory. The next year, their eldest daughter Solveig is born.



1952

For the first time, Hästens is appointed as a royal court supplier for King Gustav VI Adolf.



1963

Solveig Ryde, David's oldest daughter, takes the reins at Hästens along with her husband Jack Ryde. This is the fourth generation of family bedmakers.



1988

Jan Ryde, the fifth generation of family bedmakers, takes over the management of Hästens and proudly continues the tradition into the 21st century.



2006

Hästens is awarded the Swedish Trade Council's Grand Export Prize and launches its crown jewel, Vividus.



2018

The blue check celebrates its 40th anniversary and Hästens is now sold in 37 countries. Our exciting journey from a small family-run company has been taking place for over 166 years, and it's still only the beginning.



Cheat sheet.

Perfect sleep according to Hästens:
when you feel perfectly rested
at four o'clock in the afternoon.
We want you to live every day
as the most awake version
of yourself.

Pages 6-31

There is nothing superfluous
in your Hästens. Every detail
has a function.

Pages 34-35

Hästens' experienced
bed masters build world-class
beds completely by hand.
Natural material is unpredictable.
It requires selection and
treatment by a sensitive hand
to bring out its best qualities.

Pages 36-39

A family business in every respect:
The profession is inherited even
among the bed masters in our
factory in Köping, Sweden.

Pages 40-42

If any detail during the bedmaking
goes wrong, we start over.
No compromises.
Building a Hästens is allowed
to take the time it takes.

Pages 43-51

The Hästens bed is multifunctional:
The naturally curly fibers
in the upholstery wick away
humidity while at the same time
providing support. Our unique
layer-on-layer technique
can also be called
spring-on-spring technique.

Pages 74-75

The bed's lifelong purpose is to
maintain your spine in a straight line.
It is to provide your anatomy
with balanced support, no matter
which positions you sleep in
throughout the night.

Pages 76-77

Individual spring systems: You won't
disturb your sleeping partner.

Pages 112-113

The ingredients: curled horsetail hair
+ selected wool + untreated cotton
+ large amounts of flax + an elaborate
spring system + durable pine
+ resistant fabric.

Pages 82-123

There is still no one who knows
how old a Hästens bed can get.

Pages 130-131

Try your bed for real before
you buy it. Yes, you may sleep
in our showrooms.

Pages 134-135

The larger the bed,
the greater the comfort.

Pages 136-137

How comfortably would you
like to sleep? Our bed models.

Pages 138-205

You may think that all the work involved
with Vividus sounds extreme.
You are right.

Pages 196-205

Levels of firmness: When it comes
to beds the word "hard" is often
mistaken for "support."

Pages 208-209

Customizing: Be careful what you
wish for. We build the bed exactly
the way you want.

Pages 212-213

A Hästens bed right after the crib:
an investment in your child's
quality of sleep.

Pages 214-215

Thoughtful accessories make your
Hästens' experience complete.

Pages 234-279

A family business for five
generations – obsessed with
making the world more
harmonious. Hästens' mission
since 1852 is to create beds
that you feel the benefit from
twenty-four hours a day.

Pages 280-301

When will we have awoken the whole world?

Hästens beds are available where there are well-rested people.
You can find Hästens stores and dealers in Africa, America,
Asia and Europe. At the time of printing this catalog, we are
present in 37 countries. And we're not stopping there.

But no matter where in the world you are, we're never far away.
Just visit hastens.com to get a sense of what it's like to be in
our hometown of Köping, Sweden.

Hästens assumes no liability for any typographical errors or inaccuracies in this catalog.
The content of this catalog was available at the time of printing. Changes may have been made at a later stage.
We strive to make the colors shown as accurate as possible. However, due to the printing process, the colors in this catalog may vary.
Therefore, always consult with a Hästens dealer before making your purchase decision.

Production: Jung von Matt, Stockholm, Sweden.
Any unauthorized copying, alteration, distribution or other use of the contents of this catalog is prohibited.
©Copyright 2018 Hästens Ltd. All rights reserved.





BE AWAKE FOR THE FIRST TIME IN YOUR LIFE®